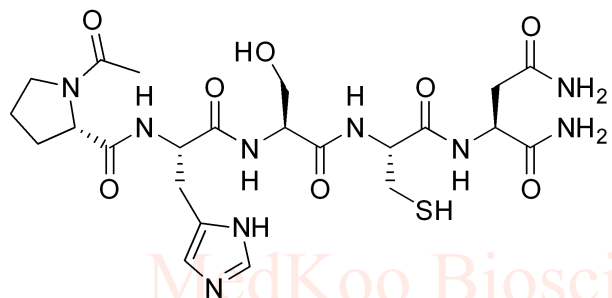


8.951 8.949 8.921 8.320 8.302 8.281 8.252 8.234 8.141 8.133 8.121 8.114 7.986 7.968 7.389 7.350 7.330 7.120 7.080 6.929 4.649 4.641 4.628 4.621 4.487 4.467 4.453 4.434 4.420 4.403 4.390 4.384 4.371 4.354 4.339 4.323 4.315 4.308 4.292 4.281 4.270 4.260 4.260 3.680 3.668 3.654 3.635 3.622 3.608 3.595 3.539 3.521 3.503 3.485 3.479 3.461 3.374 3.316 3.296 3.196 3.183 3.156 3.145 3.008 2.987 2.969 2.949 2.825 2.812 2.802 2.785 2.766 2.550

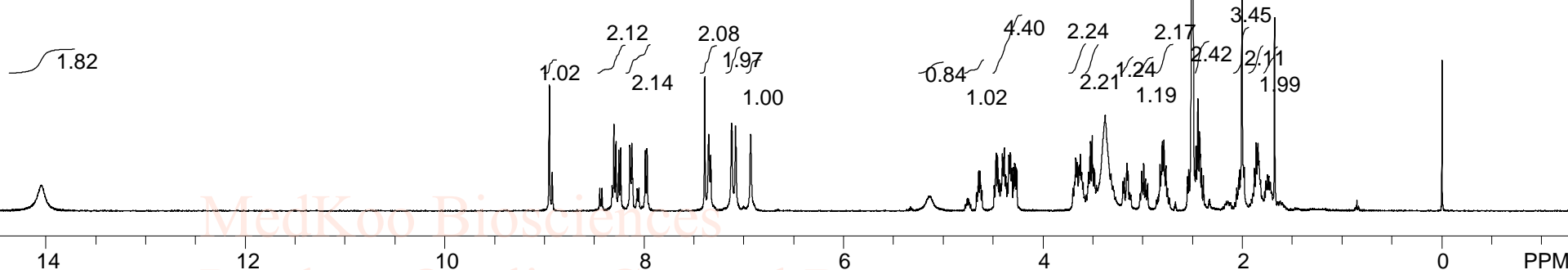
# ATN-161 freebase NMR analysis, Solvent = DMSO-d6

www.medkoo.com sales@medkoo.com



MedKoo Code#: 200350a  
 Name: ATN-161 (free base)  
 CAS#: 262438-43-7  
 Lot#BBC41015  
 Chemical Formula: C23H35N9O8S  
 Exact Mass: 597.23293  
 Molecular Weight: 597.64

MedKoo Biosciences  
 Product Quality Control Data  
 www.medkoo.com sales@medkoo.com



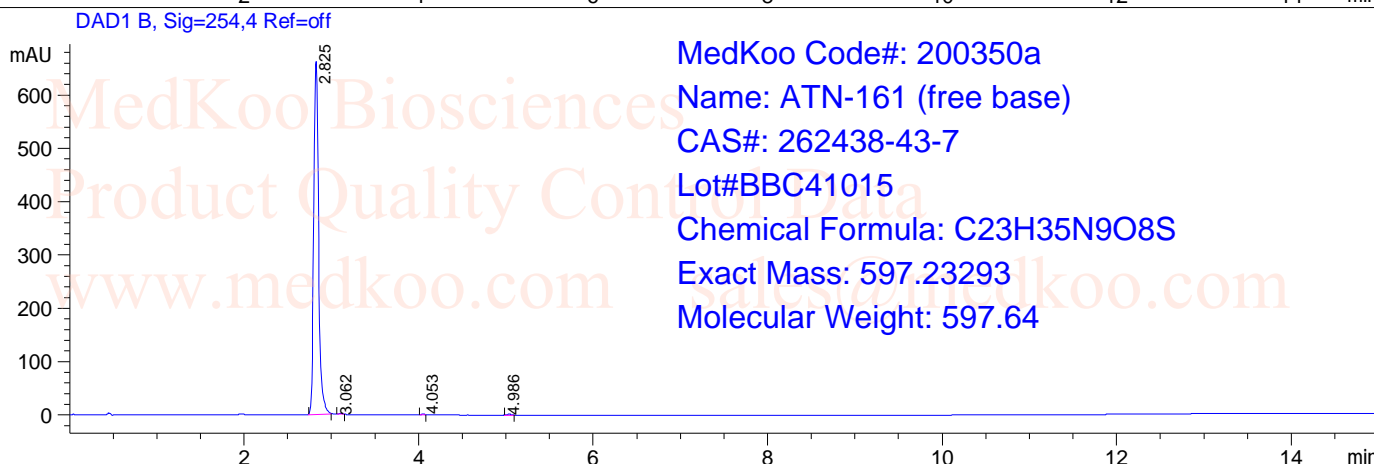
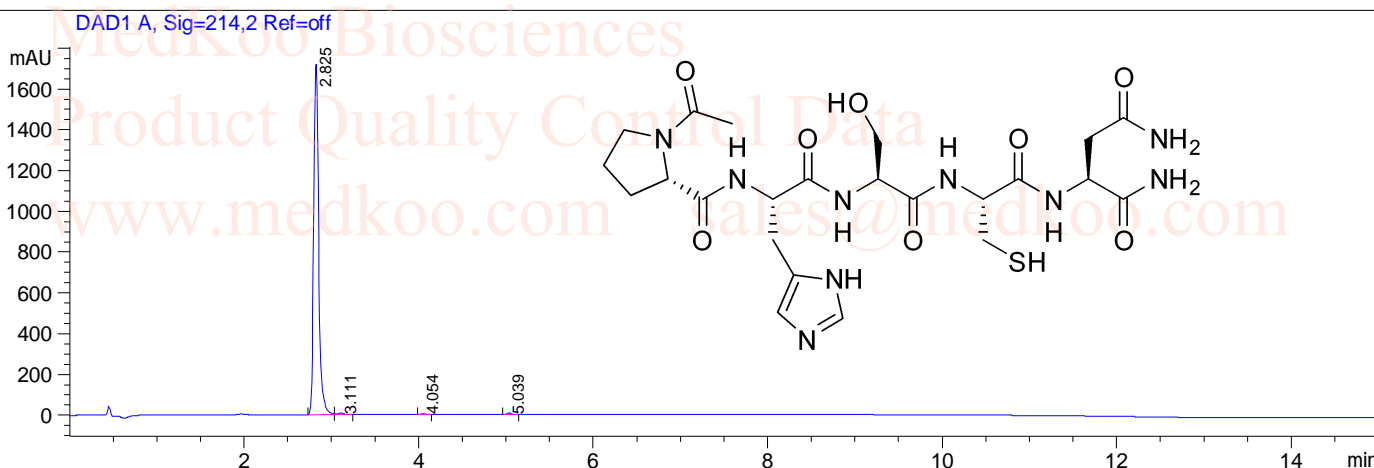
MedKoo Biosciences  
 Product Quality Control Data  
 www.medkoo.com sales@medkoo.com

spect, DMSO,							
F1: 400.132	F2: 1.000	SW1: 8013		OF1: 2467.9		PTS1d: 65536	
EX: zg30		PW: 14.8 usec	PD: 1.0 sec	NA: 16	LB: 0.0		Nuts - \$pdata

# ATN161 Free base HPLC analysis

Sample Name : 1015-SM  
 Acq. Operator : 3  
 Spec. Reported : Integration

Seq. Line : 0  
 Location : P2-D-05  
 Inj : 0  
 Inj Volume : 1.7 ul



Integration Results for DAD1 A, Sig=214,2 Ref=off

RetTim	Width	Area	Height	Area%
2.82	0.06	6731.61	1727.29	98.68
3.11	0.08	42.98	7.81	0.63
4.05	0.05	19.62	5.84	0.29
5.04	0.06	27.39	6.78	0.40

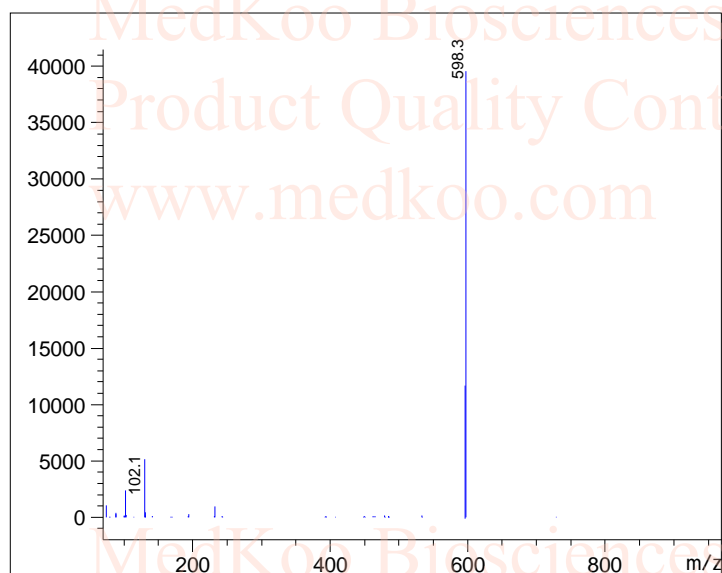
Integration Results for DAD1 B, Sig=254,4 Ref=off

RetTim	Width	Area	Height	Area%
2.82	0.06	2542.23	665.83	99.45
3.06	0.05	4.53	0.10	0.18
4.05	0.05	3.90	1.40	0.15
4.99	0.06	5.52	0.19	0.22

# ATN161 MS analysis

Sample Name : A  
Acq. Operator : 8  
Spec. Reported : MS  
Acq. Method : D:\Chem32.M  
Analysis Method : D:\CHEM32.M  
Sample Info : Easy-Access Method: '1.M'

Seq. Line : 0  
Location : P2-D-07  
Inj : 0  
Inj Volume : 1.8 ul



MedKoo Code#: 200350a  
Name: ATN-161 (free base)  
CAS#: 262438-43-7  
Lot#BBC41015  
Chemical Formula: C<sub>23</sub>H<sub>35</sub>N<sub>9</sub>O<sub>8</sub>S  
Exact Mass: 597.23293  
Molecular Weight: 597.64