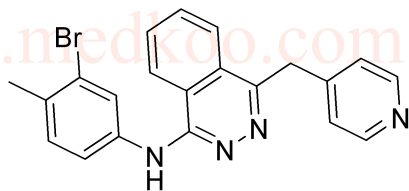


# ACC789 HNMR analysis, solvent=DMSO-d6

8.612  
8.592  
8.460  
8.457  
8.449  
8.445  
8.395  
8.124  
8.105  
8.004  
7.987  
7.969  
7.950  
7.932  
7.914  
7.847  
7.830  
7.342  
7.337  
7.322  
4.593  
3.342  
2.511  
2.507  
2.503  
2.337



MedKoo Cat#: 406754  
Name: ACC-789  
CAS#: 300842-64-2  
Lot: C8R02B09  
Chemical Formula: C<sub>21</sub>H<sub>17</sub>BrN<sub>4</sub>  
Exact Mass: 404.0637  
Molecular Weight: 405.299

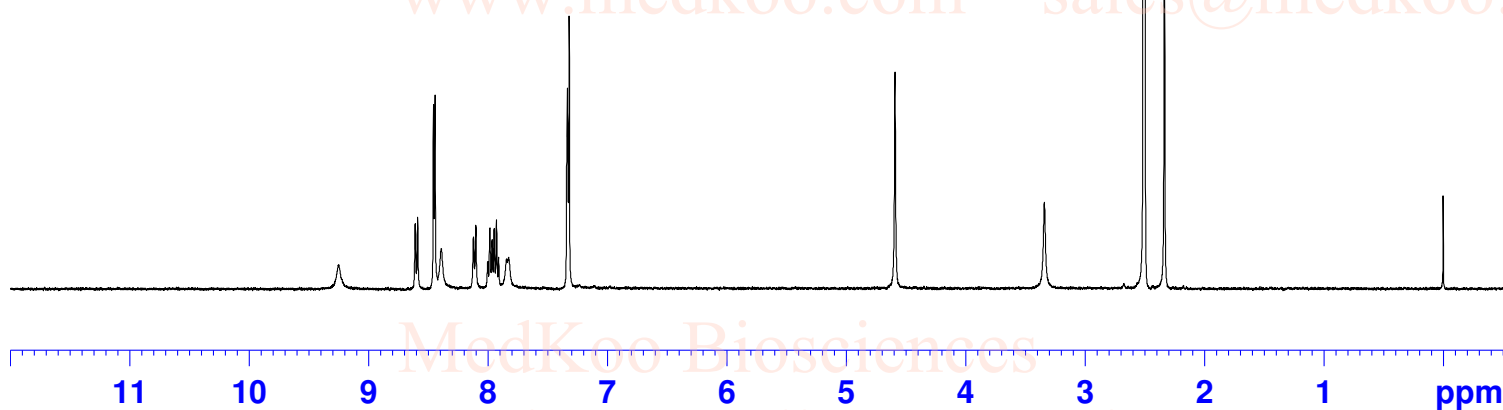


```

NAME ACC789
EXPNO 1
PROCNO 1
INSTRUM spect
PROBHD 5 mm PASEI
PULPROG 1H/ zg30
TD 65536
SOLVENT DMSO
NS 16
DS 0
SWH 8223.685 Hz
FIDRES 0.125483 Hz
AQ 3.9846387 sec
RG 2050
DW 60.800 usec
DE 6.50 usec
TE 294.2 K
D1 1.00000000 sec
TD0 1
    
```

```

===== CHANNEL f1 =====
NUC1 1H
P1 7.00 usec
PL1 -2.00 dB
PL1W 12.73942947 W
SFO1 400.1324710 MHz
SI 32768
SF 400.1300000 MHz
WDW EM
SSB 0
LB 0.30 Hz
GB 0
PC 1.00
    
```

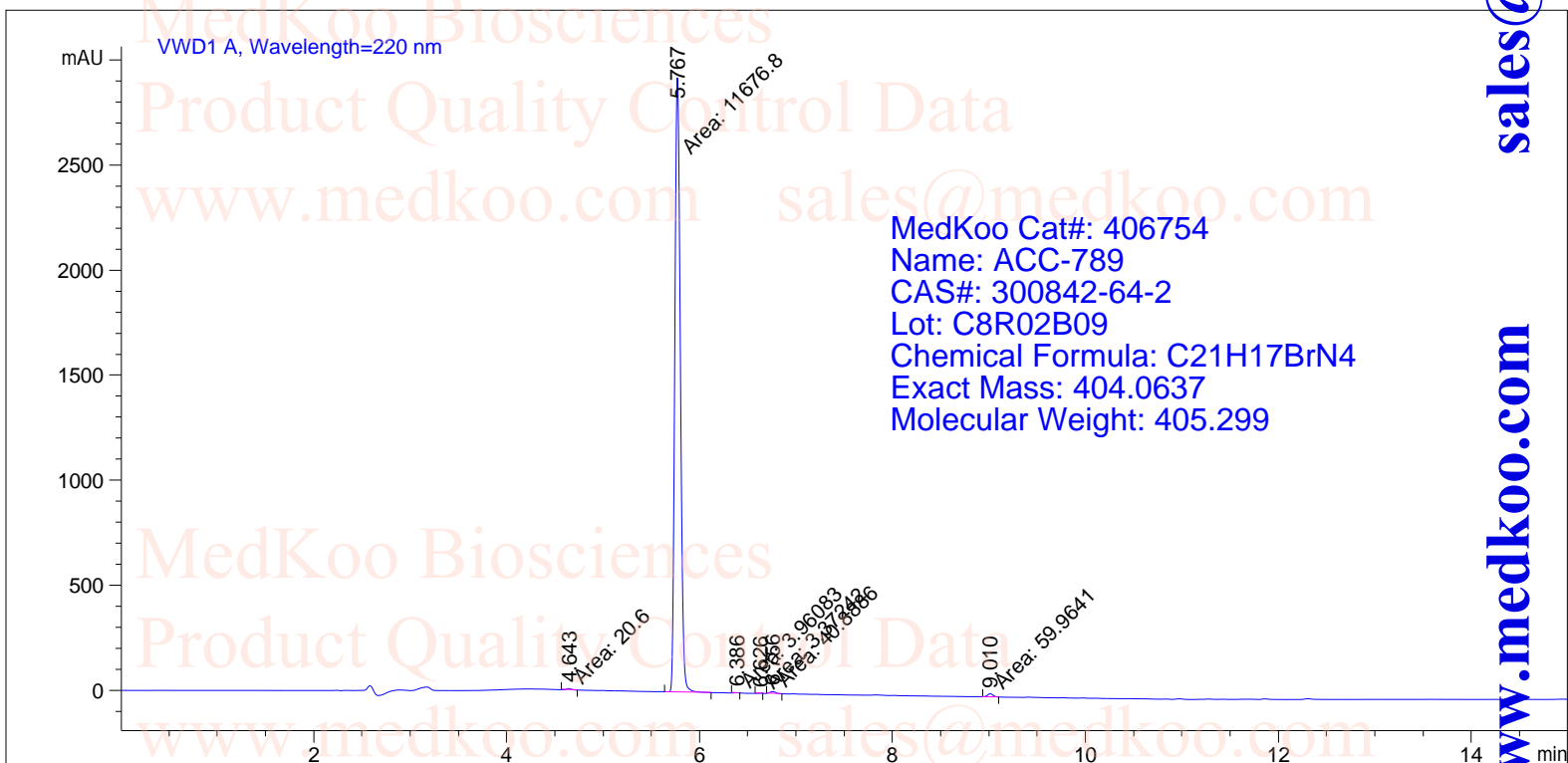


0.78  
0.90  
2.94  
0.97  
2.07  
1.01  
3.06  
1.98  
3.00

# ACC789 HPLC analysis

```

=====
Acq. Operator   : System                Seq. Line :    1
Acq. Instrument : LC1260                 Location  : Vial 42
Sample Name    : ACC789                 Inj       :    1
                                               Inj Volume: 5 µl
Different Inj Volume from Sequence !    Actual Inj Volume : 5 µl
Acq. Method    : E:\DATA\YZJ\Data\10-90 AD 220 15MIN
Analysis Method: D:\PUBLIC\METHOD\B 6MIN.M
    
```



```

MedKoo Cat#: 406754
Name: ACC-789
CAS#: 300842-64-2
Lot: C8R02B09
Chemical Formula: C21H17BrN4
Exact Mass: 404.0637
Molecular Weight: 405.299
    
```

## Area Percent Report

```

Sorted By       :      Signal
Multiplier      :      1.0000
Dilution        :      1.0000
Use Multiplier & Dilution Factor with ISTDs
Signal 1: VWD1 A, Wavelength=220 nm
    
```

Peak #	RetTime [min]	Type	Width [min]	Area [mAU*s]	Height [mAU]	Area %
1	4.643	MM	0.0577	20.60002	5.94886	0.1745
2	5.767	MM	0.0665	1.16768e4	2928.30957	98.9091
3	6.386	MM	0.0508	3.96083	1.30025	0.0336
4	6.626	MM	0.0541	3.37242	1.03816	0.0286
5	6.756	MM	0.0698	40.88856	9.76214	0.3464
6	9.010	MM	0.0666	59.96415	14.99650	0.5079

Totals : 1.18055e4 2961.35548

