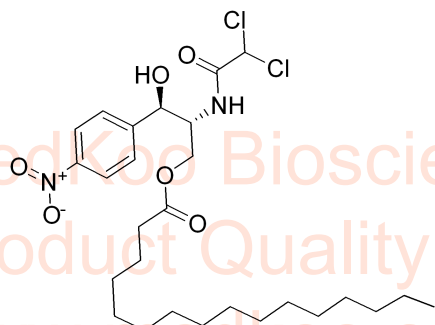


# Chloramphenicol palmitate HNMR Analysis, Solvent: CDCl<sub>3</sub>

MedKoo Biosciences

Product Quality Control Data

www.medkoo.com Sales@medkoo.com



MedKoo Cat#: 592235

Name: Chloramphenicol palmitate

CAS#: 530-43-8 (palmitate)

Lot#: A22A12B29

Chemical Formula: C<sub>27</sub>H<sub>42</sub>Cl<sub>2</sub>N<sub>2</sub>O<sub>6</sub>

Exact Mass: 560.242

Molecular Weight: 561.54

MedKoo Biosciences

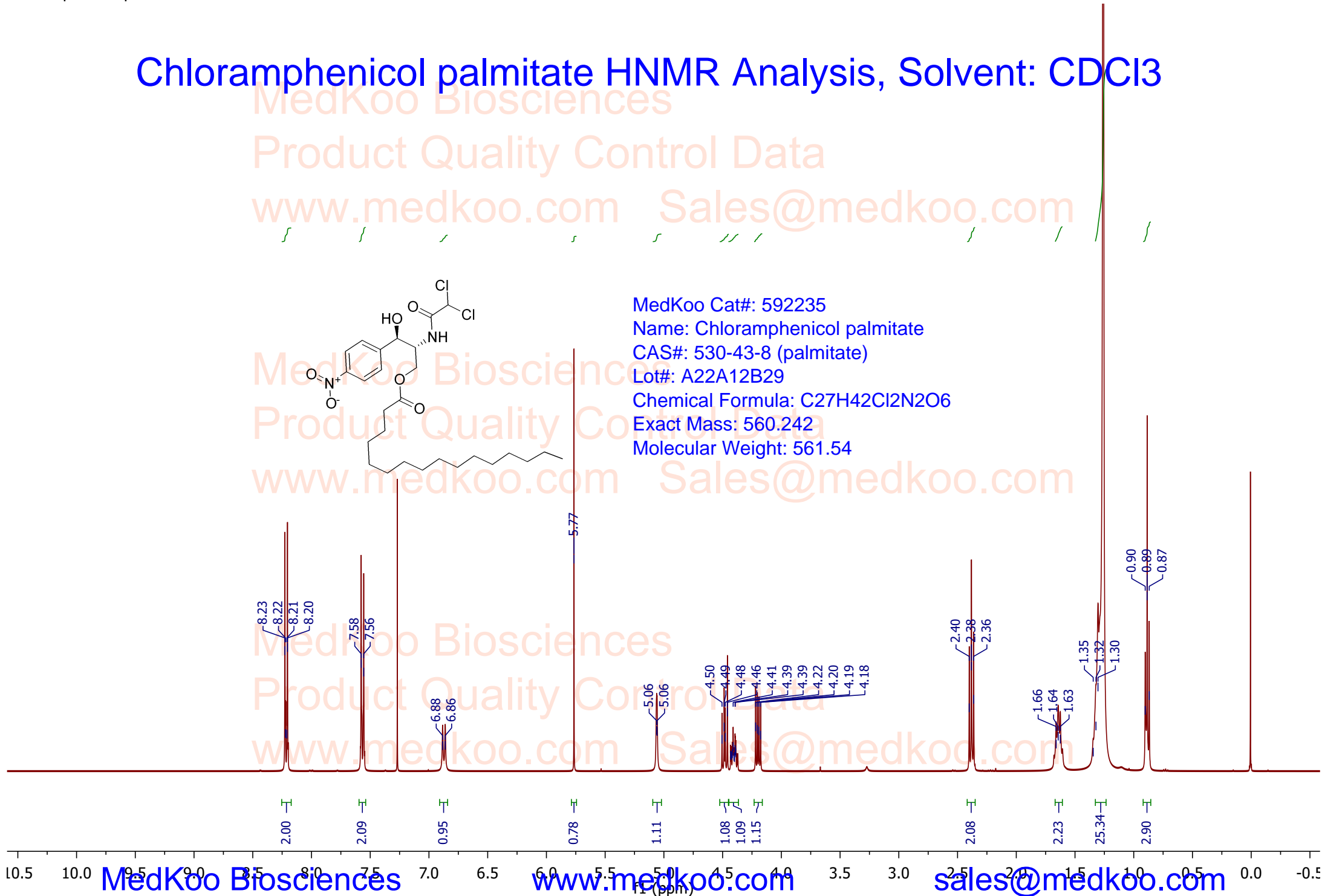
Product Quality Control Data

www.medkoo.com Sales@medkoo.com

MedKoo Biosciences

Product Quality Control Data

www.medkoo.com Sales@medkoo.com



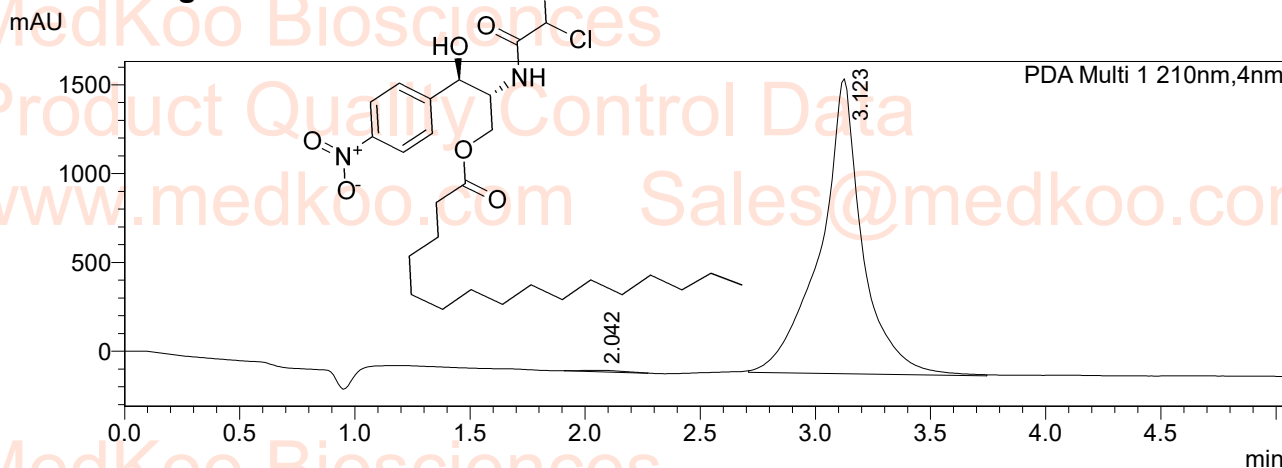
# Chloramphenicol palmitate LC/MS Analysis

## <Sample Information>

Sample Name : chris  
 Sample ID : chris  
 Data Filename : chris\_147\_002.lcd  
 Method Filename : AS\_b98\_t8.lcm  
 Batch Filename : YYC\_Aug\_Table\_01.lcb  
 Vial # : 1-130  
 Injection Volume : 3 uL

Sample Type : Unknown  
 Acquired by : System Administrator  
 Processed by : System Administrator

## <Chromatogram>



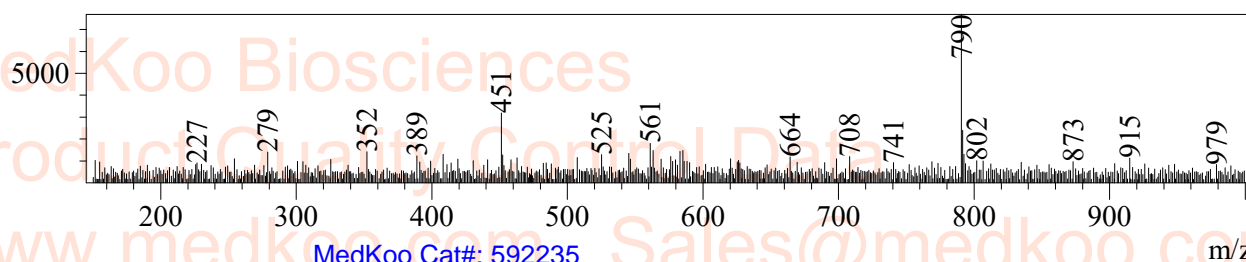
Peak Table

PDA Ch1 210nm

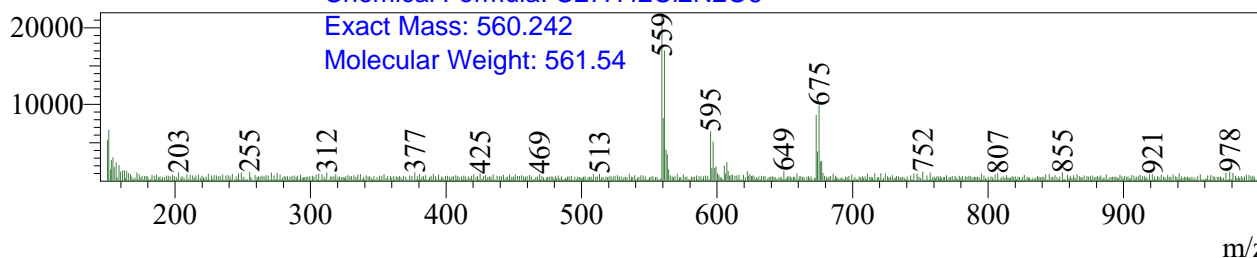
Peak#	Ret. Time	Peak Start	Peak End	Height	Area	Area%
1	2.042	1.909	2.272	7313	97973	0.463
2	3.123	2.709	3.744	1659602	21068085	99.537
Total				1666914	21166058	100.000

## MS Spectrum

R.Time:3.200(Scan#:193)  
 MassPeaks:840  
 Segment 1 - Event 1



R.Time:3.216(Scan#:194)  
 MassPeaks:821  
 Segment 1 - Event 2



MedKoo Cat#: 592235  
 Name: Chloramphenicol palmitate  
 CAS#: 530-43-8 (palmitate)  
 Lot#: A22A12B29  
 Chemical Formula: C<sub>27</sub>H<sub>42</sub>Cl<sub>2</sub>N<sub>2</sub>O<sub>6</sub>  
 Exact Mass: 560.242  
 Molecular Weight: 561.54