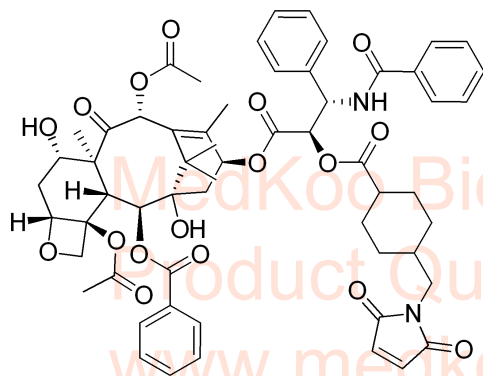


Paclitaxel-SMCC HNMR Analysis, Solvent: DMSO

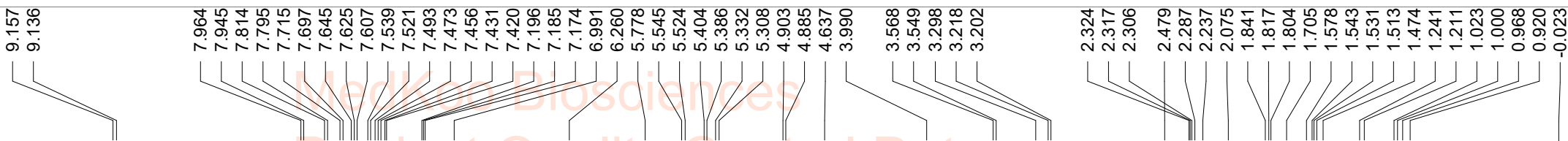
www.medkoo.com Sales@medkoo.com



MedKoo Cat#: 407803
 Name: Paclitaxel-SMCC
 CAS#: Unknown
 Lot#: S21S06C03
 Chemical Formula: C₅₉H₆₄N₂O₁₇
 Exact Mass: 1072.4205
 Molecular Weight: 1073.16

www.medkoo.com Sales@medkoo.com

Product Quality Control Data
 www.medkoo.com Sales@medkoo.com



9.157
9.136

7.964

7.945

7.814

7.795

7.715

7.697

7.645

7.625

7.607

7.539

7.521

7.493

7.473

7.456

7.431

7.420

7.196

7.185

7.174

6.991

6.260

5.778

5.545

5.524

5.404

5.386

5.332

5.308

4.903

4.885

4.637

3.990

3.568

3.549

3.298

3.218

3.202

2.324

2.317

2.306

2.479

2.287

2.237

2.075

1.841

1.817

1.804

1.705

1.578

1.543

1.531

1.513

1.474

1.241

1.211

1.023

1.000

0.968

0.920

-0.023

1.00

2.07

2.05

1.05

2.09

7.33

1.06

1.73

0.97

1.02

1.06

2.09

2.06

1.02

3.08

1.01

2.08

3.08

1.01

2.20

3.02

3.21

2.98

8.52

2.63

8.13

8

6

4

2

PPM

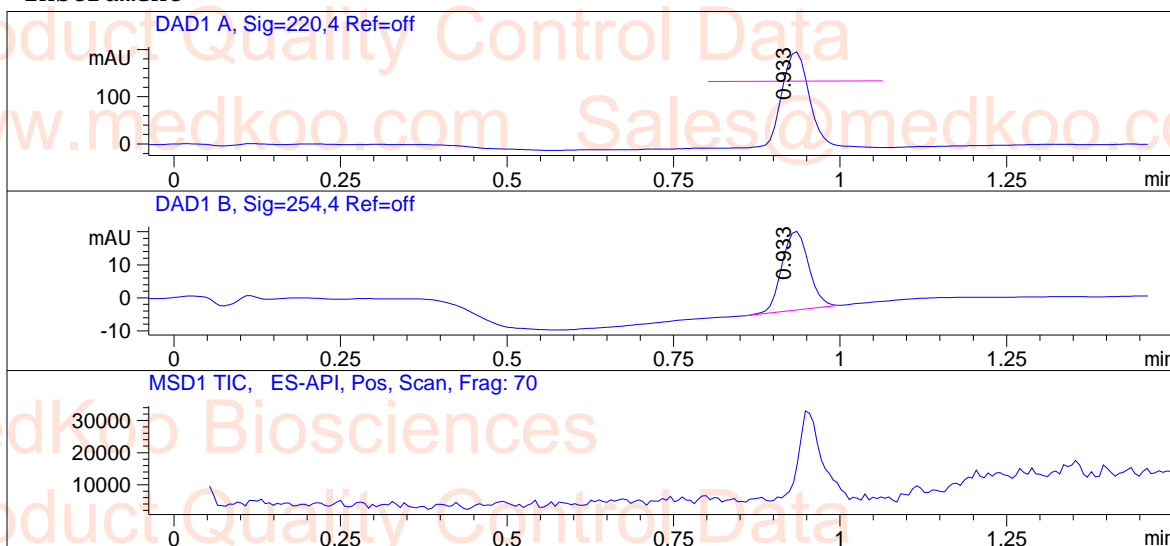
Paclitaxel-SMCC, d6-DMSO, 400MHz

F1: 399.820	F2: 100.544	SW1: 6410	OF1: 2398.9	PTS1d: 16384
EX: s2pul	PW: 9.4 usec	PD: 5.0 sec	NA: 16	LB: 0.0

Nuts - \$PROTON_01.fid

Paclitaxel-SMCC HPLC Analysis

Compound ID : Paclitaxel-SMCC
Sample ID : Paclitaxel-SMCC
Location : P1-B-09
Injection volume : 1.000
Acq. Method : E:\DATA\5-95AB_R_220&254.M
Data Filename : D:\DATA\CAS00055-YCSW-PTX.D
Instrument :



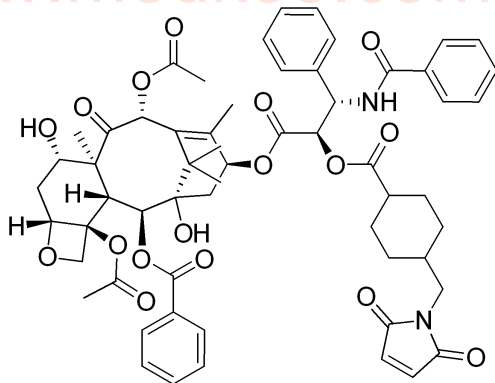
Report

Signal 1 : DAD1 A, Sig=220,4 Ref=off

#	Meas. Ret.	Height	Width	Area	Area %
1	0.933	204.221	0.046	590.226	100.000

Signal 2 : DAD1 B, Sig=254,4 Ref=off

#	Meas. Ret.	Height	Width	Area	Area %
1	0.933	23.956	0.045	67.098	100.000



MedKoo Cat#: 407803
Name: Paclitaxel-SMCC
CAS#: Unknown
Lot#: S21S06C03
Chemical Formula: C59H64N2O17
Exact Mass: 1072.4205
Molecular Weight: 1073.16

Paclitaxel-SMCC LC/MS Analysis

