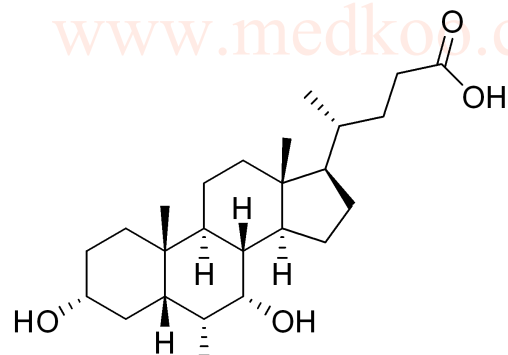
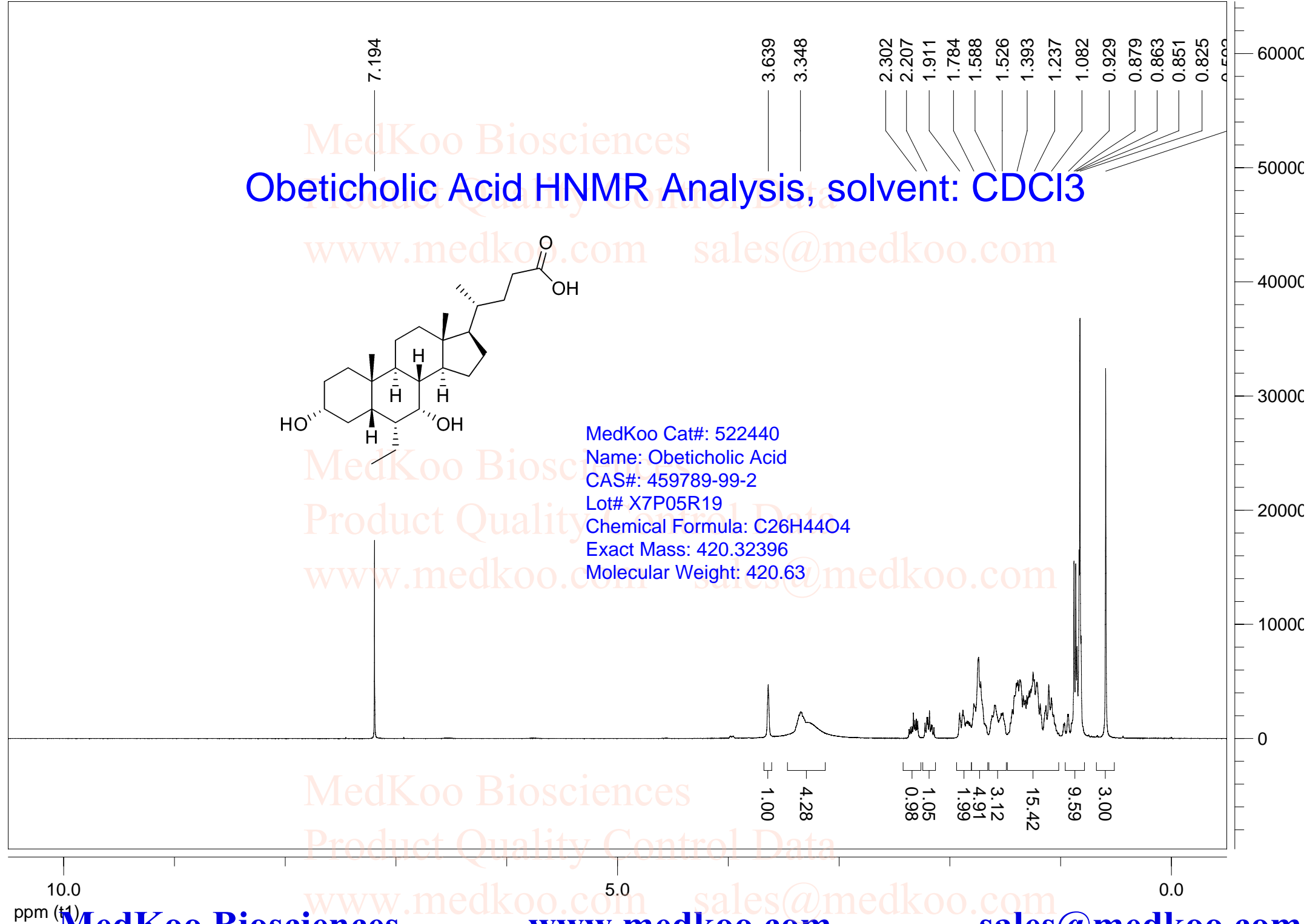


Obeticholic Acid HNMR Analysis, solvent: CDCl₃



MedKoo Cat#: 522440
Name: Obeticholic Acid
CAS#: 459789-99-2
Lot# X7P05R19
Chemical Formula: C₂₆H₄₄O₄
Exact Mass: 420.32396
Molecular Weight: 420.63



Obeticholic Acid HPLC Analysis

<Sample Information>

LC-20AD Condition

Column :Xbridge C18,150*4.6mm,3.5µm

Mobile Phase :Solvent A:H2O(0.02% NH4OH)

Solvent B:ACN

Run time :2min@20%B,7min gradient (20-90% B), then3min @90%B

Flow rate :1.0mL/min

Temperature :35°C

Wave length :UV210nm

Description :2.5mg/mL in ACN

Data Filename :459789-99-2.lcd

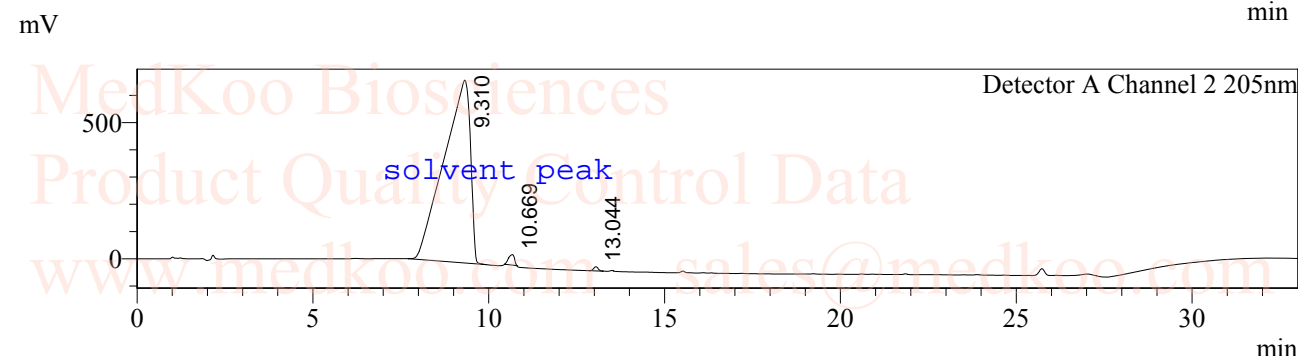
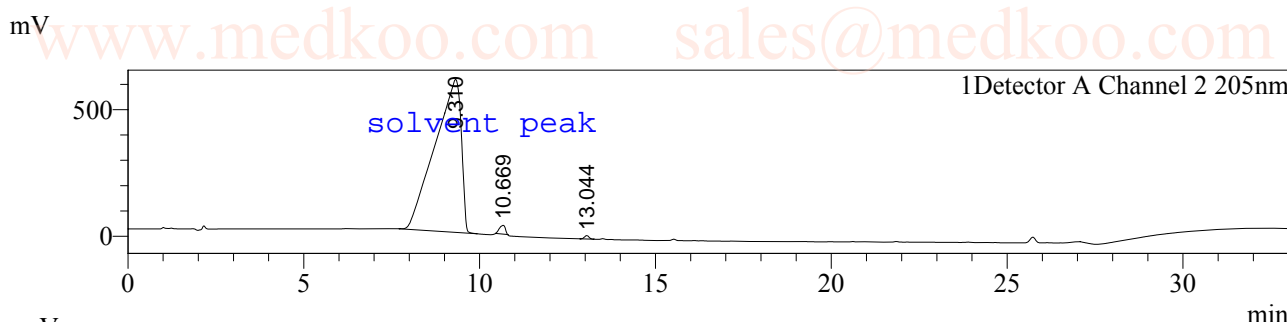
Injection Volume :5µL

User name :WYY

Method Filename:20-90%H2O(NH4OH)-MeCN Xbridge.lcm

Notebook page :459789-99-2.lcd

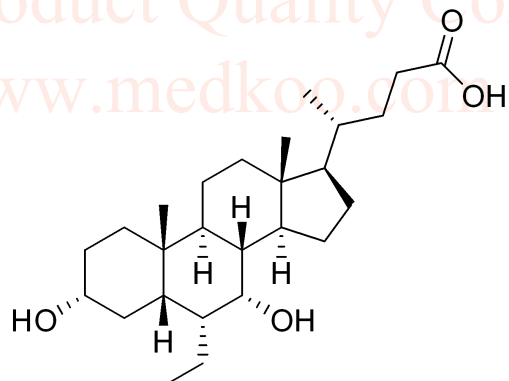
<Chromatogram>



<Peak Table>

Detector A Channel 2 205nm

Peak#	Ret. Time	Area	Area%	Height	Resolution(USP)	NTP	Tailing Factor
1	9.310	34986489	98.365	671034	--	530	0.623
2	10.669	446200	1.254	38303	1.408	18742	0.783
3	13.044	135456	0.381	15094	8.445	43305	1.005
Total		35568145	100.000	724431			



MedKoo Cat#: 522440

Name: Obeticholic Acid

CAS#: 459789-99-2

Lot# X7P05R19

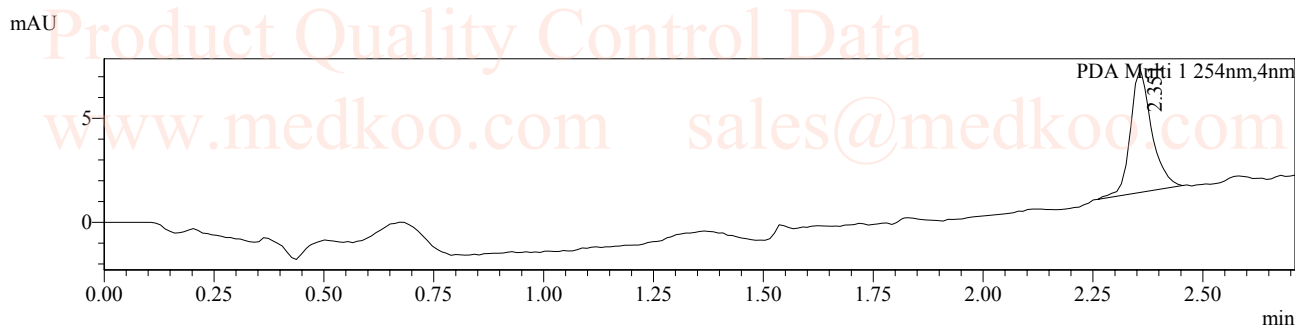
Chemical Formula: C₂₆H₄₄O₄

Exact Mass: 420.32396

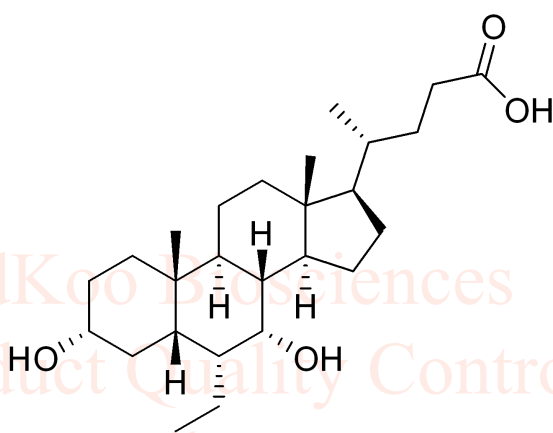
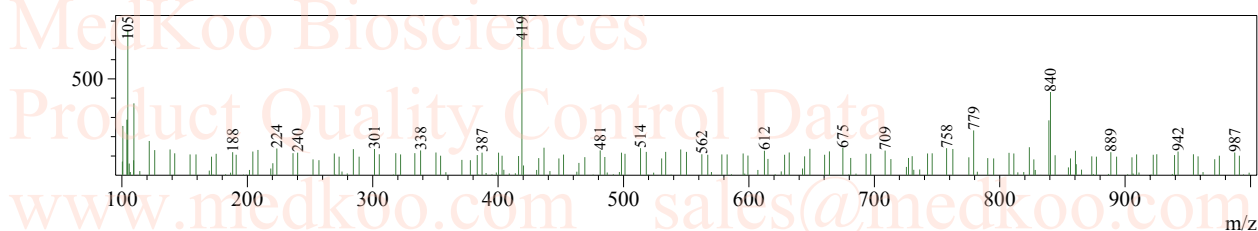
Molecular Weight: 420.63

Obeticholic Acid LCMS Analysis

LC-MS condition
Column : Chromolith SpeedROD ,RP-18e,50*4.6mm LCMS-002
Mobile Phase : A: H2O(0.05%FA)
 B: CH3CN
Temperature : 35°C
Flow rate : 2.5mL/min
Run time : 0.1min@20%B,2.0min gradient(20-95% B), then0.7min@95% B
Injection volume : 5 uL
Detector : UV205nm
Mass range : 100-1000
Scan : Postive/Negative
User Name : 459789-99-2
Notebook page :S10



Peak#:1 R.Time:2.729(Scan#:222)
MassPeaks:187
Spectrum Mode:Averaged 2.700-2.750(220-224)
BG Mode:Calc Segment 1 - Event 2



MedKoo Cat#: 522440
Name: Obeticholic Acid
CAS#: 459789-99-2
Lot# X7P05R19
Chemical Formula: C₂₆H₄₄O₄
Exact Mass: 420.32396
Molecular Weight: 420.63