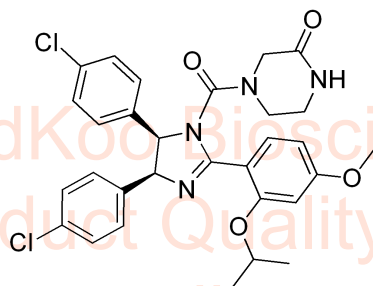


Nutlin-3a HNMR Analysis, Solvent: CDCl₃

Product Quality Control Data

www.medkoo.com Sales@medkoo.com



MedKoo Cat#: 406308

Name: Nutlin-3a

CAS#: 675576-98-4 (4S5R)

Lot#: T22D03P02

Chemical Formula: C₃₀H₃₀Cl₂N₄O₄

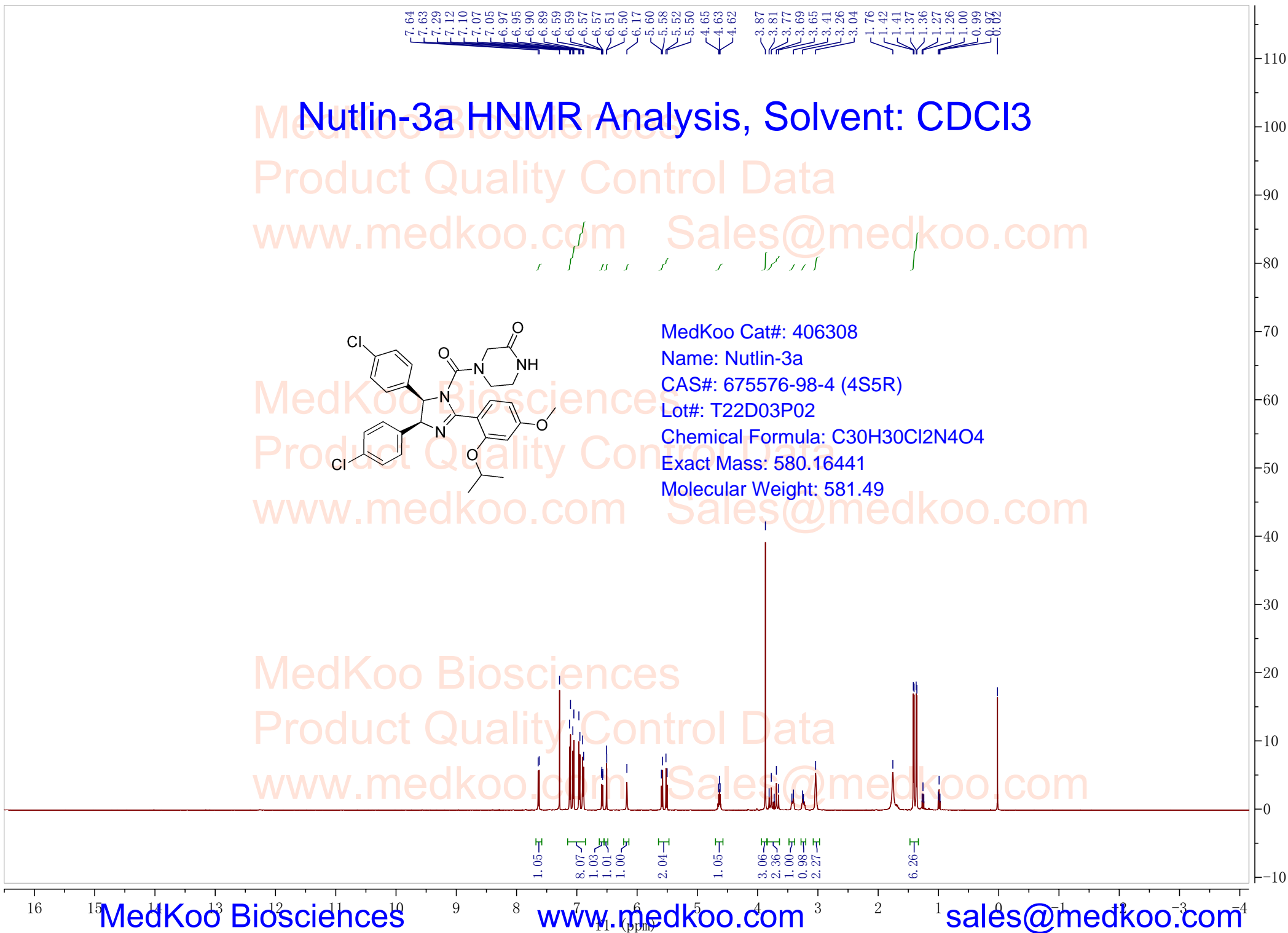
Exact Mass: 580.16441

Molecular Weight: 581.49

MedKoo Biosciences

Product Quality Control Data

www.medkoo.com Sales@medkoo.com



MedKoo Biosciences

www.medkoo.com

sales@medkoo.com

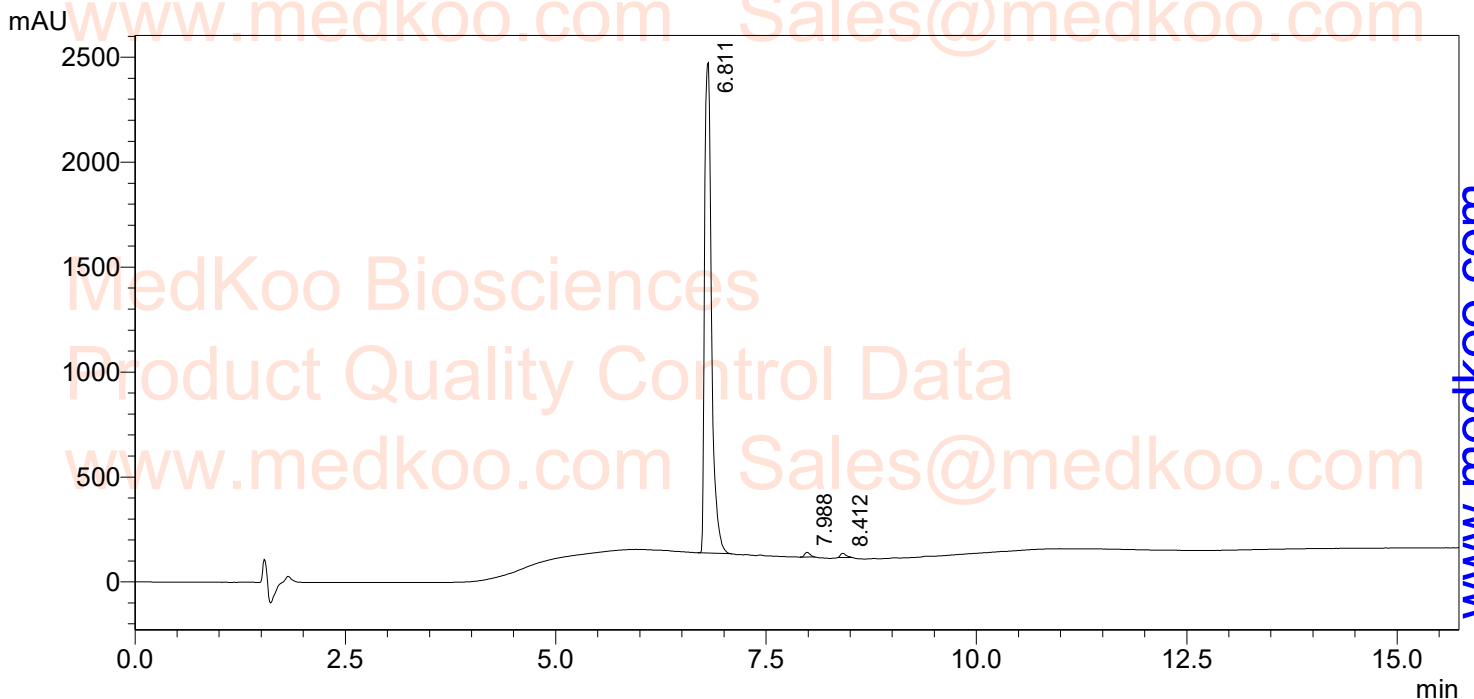
Nutlin-3a HPLC Analysis

Sample Name : NUTLIN-3A 675576-98-4
Vial# : 1-83

Injection Volume : 1 uL

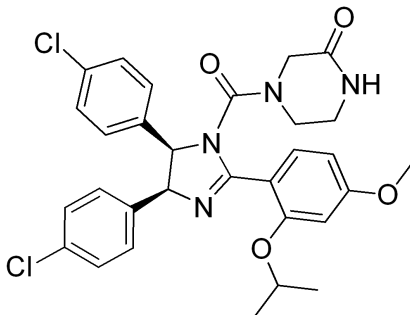
Data Filename : E:\DATA\NUTLIN-3A 675576-98-4.lcd
Method Filename : C:\LabSolutions\Data\Project1\LCMS-WT1.lcm

FLOW RATE: 1ML/MIN
COLUMN: KROMASIL 100-5-C8 150*4.6MM 5UM
COLUME TEMPERATURE: 25
GRADIENT PROGRAMME:
TIME(MIN) MOBILE PHASE-A(H2O+0.1%HCOOH) MOBILE PHASE-B(CH3CN+0.1%HCOOH)
0 90 10
5 0 100
15 0 100



PDA Ch1 214nm

Peak#	Ret. Time	Height	Height%	Area	Area%
1	6.811	2331048	98.196	13314809	98.517
2	7.988	23006	0.969	103647	0.767
3	8.412	19814	0.835	96789	0.716
总计		2373869	100.000	13515245	100.000



MedKoo Cat#: 406308

Name: Nutlin-3a

CAS#: 675576-98-4 (4S5R)

Lot#: T22D03P02

Chemical Formula: C30H30Cl2N4O4

Exact Mass: 580.16441

Molecular Weight: 581.49

Nutlin-3a MS Analysis

Sample Name : NUTLIN-3A 675576-98-4
User : System Administrator
Sample Type : Unknown
Location : 1
Vial # : 83
Inj. Volume : 1
Data File : NUTLIN-3A 675576-98-4.lcd
Method : LCMS-WT1.lcm

