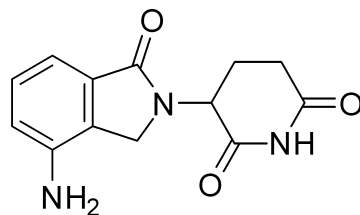


# Lenalidomide NMR Analysis, Solvent = DMSO



MedKoo Code#: 100500

Name: Lenalidomide

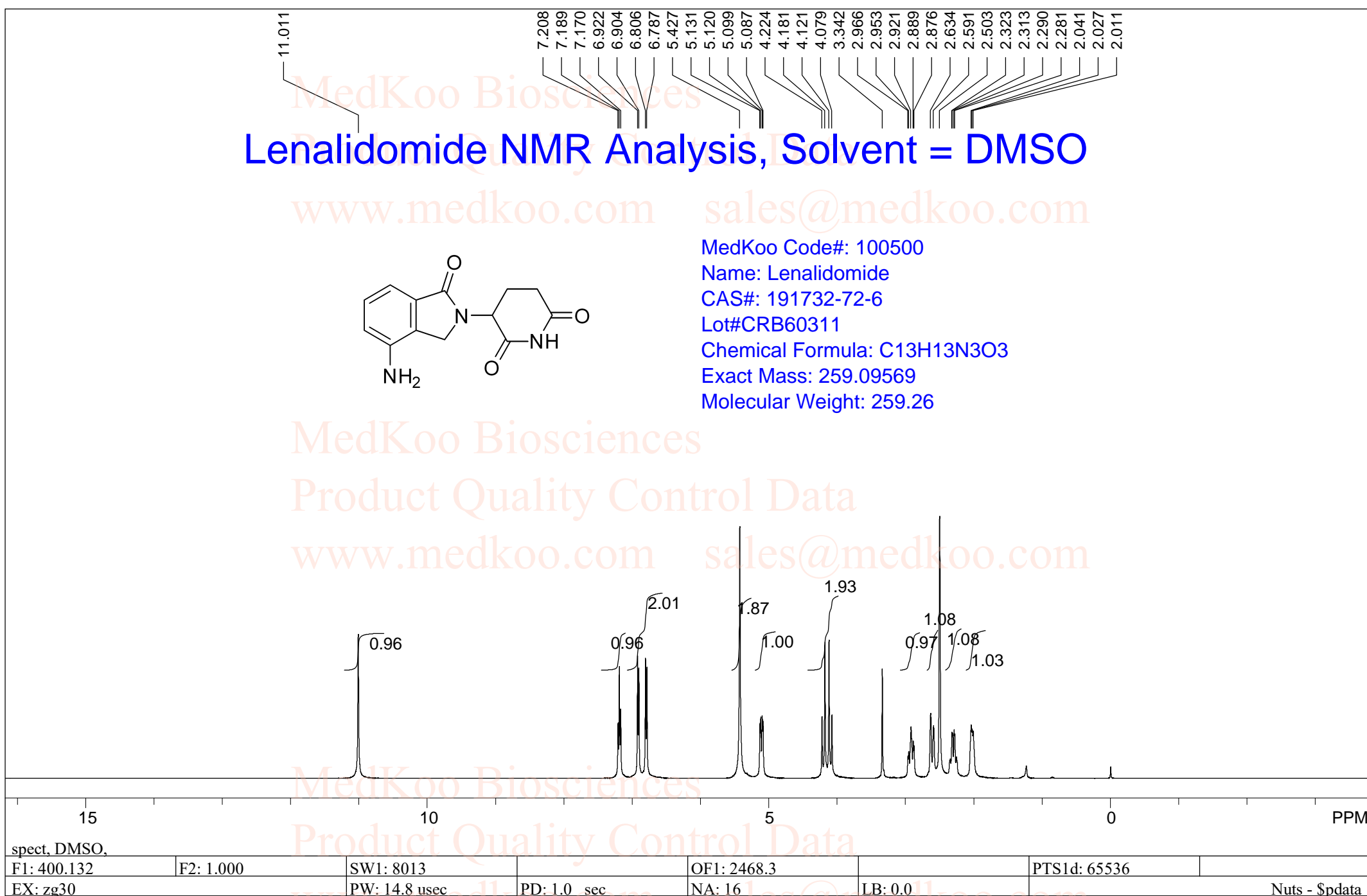
CAS#: 191732-72-6

Lot#CRB60311

Chemical Formula: C<sub>13</sub>H<sub>13</sub>N<sub>3</sub>O<sub>3</sub>

Exact Mass: 259.09569

Molecular Weight: 259.26

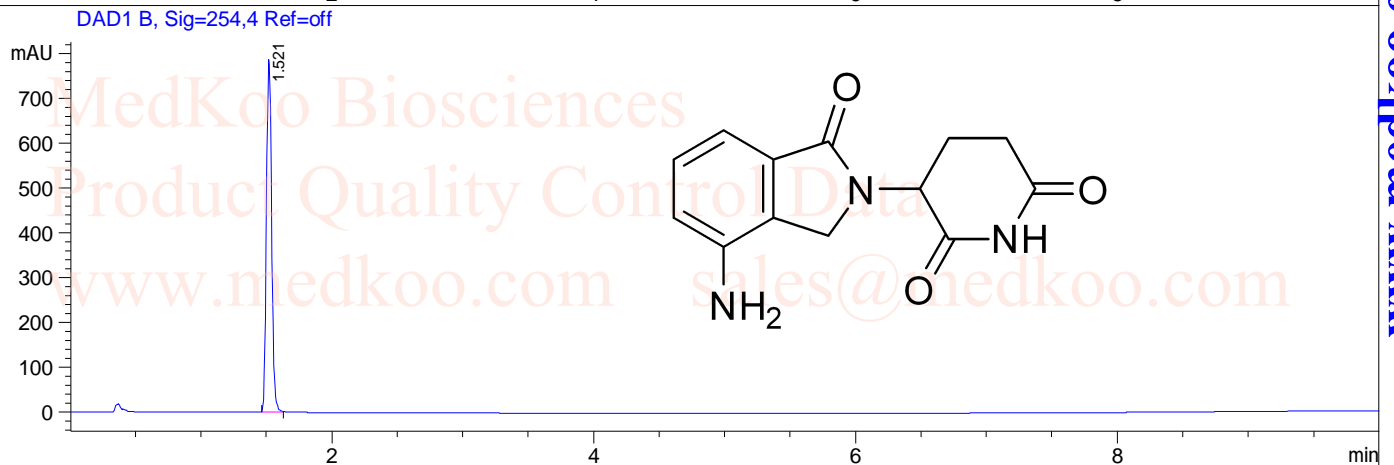
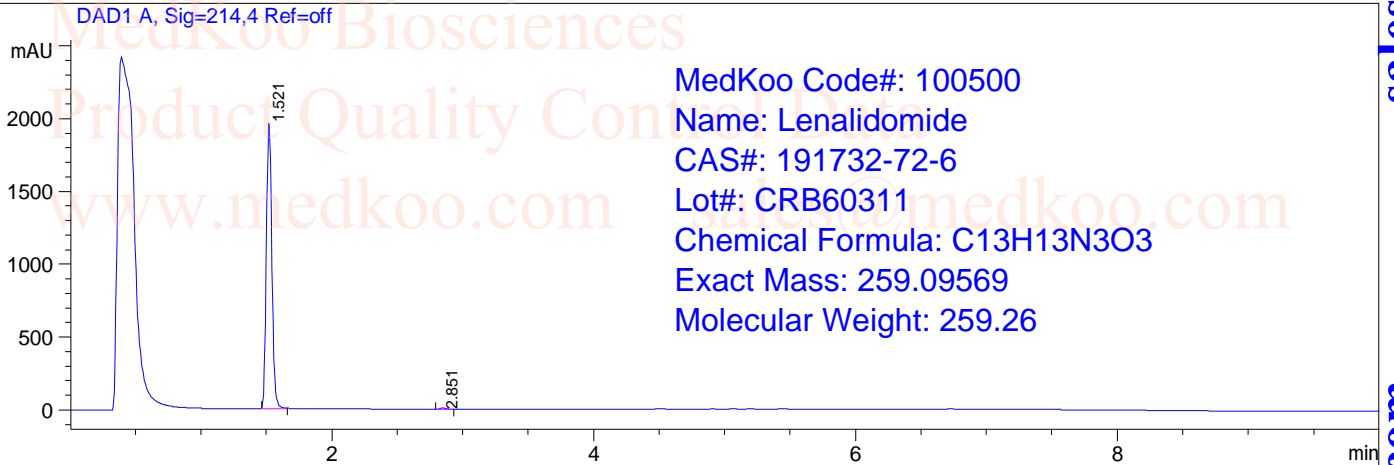


# Lenalidomide HPLC Analysis

Sample Name :10  
Spec. Reported :Integration

Location : P2-D-08

Inj Volume : 2 ul



### Integration Results for DAD1 A, Sig=214,4 Ref=off

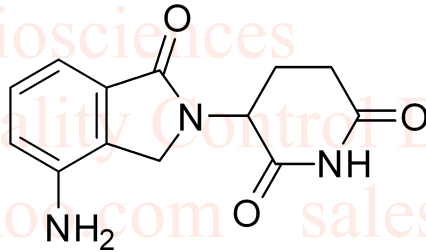
RetTim	Width	Area	Height	Area%
1.52	0.05	5829.14	1977.63	99.68
2.85	0.05	18.68	6.45	0.32

### Integration Results for DAD1 B, Sig=254,4 Ref=off

RetTim	Width	Area	Height	Area%
1.52	0.04	2223.62	792.29	100.00

# Lenalidomide MS Analysis

Sample Name : 10  
Acq. Operator : 8



MedKoo Code#: 100500

Name: Lenalidomide

CAS#: 191732-72-6

Lot#CRB60311

Chemical Formula: C<sub>13</sub>H<sub>13</sub>N<sub>3</sub>O<sub>3</sub>

Exact Mass: 259.09569

Molecular Weight: 259.26