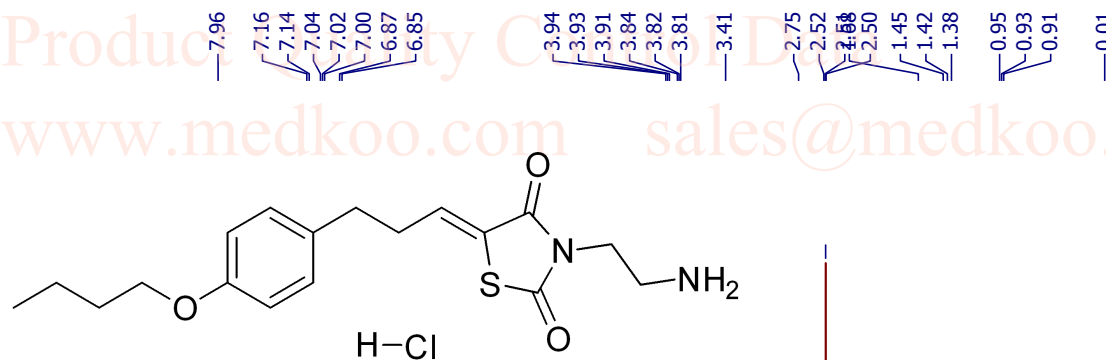
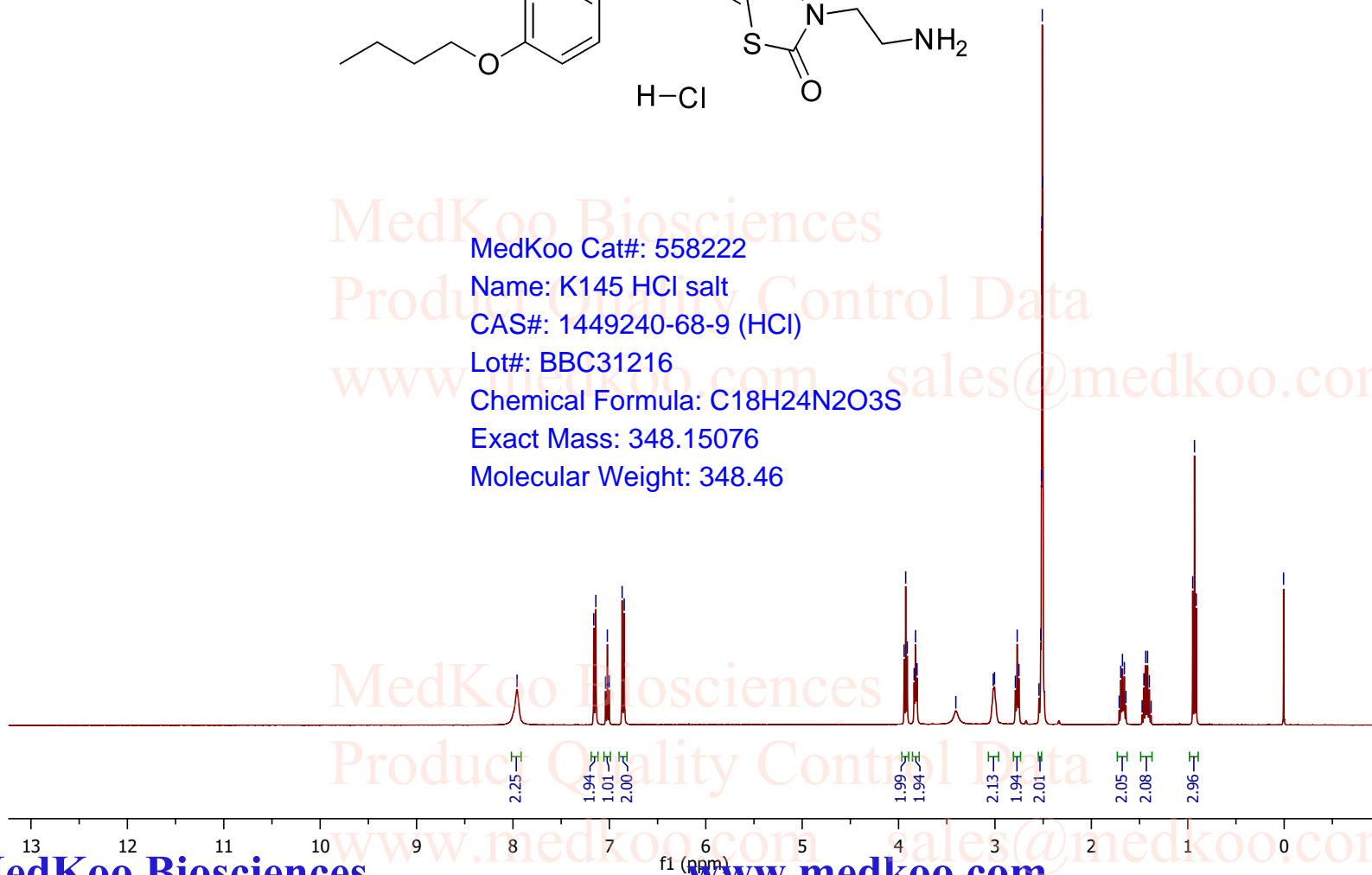


K145 HCl salt HNMR Analysis, Solvent:DMSO-d6



MedKoo Cat#: 558222
 Name: K145 HCl salt
 CAS#: 1449240-68-9 (HCl)
 Lot#: BBC31216
 Chemical Formula: C₁₈H₂₄N₂O₃S
 Exact Mass: 348.15076
 Molecular Weight: 348.46

Parameter	Value
Title	ly-3
Origin	Bruker BioSpin GmbH
Owner	nmrsu
Site	
Spectrometer	spect
Author	
Solvent	DMSO
Temperature	294.4
Pulse	zg30
Sequence	
Number of Scans	16
Receiver Gain	182
Relaxation Delay	1.0000
Pulse Width	14.5000
Acquisition	4.0894
Spectrometer Frequency	400.13
Spectral Width	8012.8
Lowest Frequency	-1535.4
Nucleus	¹ H
Acquired Size	32768
Spectral Size	65536



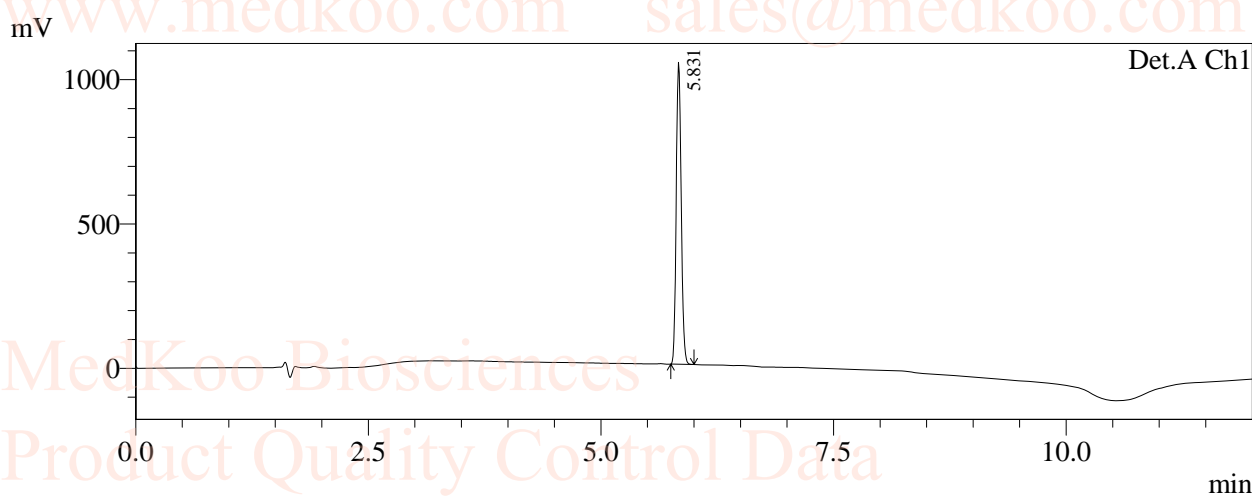
K145 HCl salt HPLC Analysis

Sample Information

Sample Name : LY-3
Sample ID : LY-3
Tray# : 2
Vial# : 1
Injection Volume : 1 uL
Data Filename : LY-3_1.lcd
Method Filename : AB-10-100-10MIN-45C.lcm

Description : METHOD: 10-100
COLUMN: Gemini 5UM 4.6*150MM
MOBILE: H2O(0.05% TFA)-ACN(0.05% TFA) 0-8 MIN ACN FROM 10% TO 100%
8-10 MIN ACN FROM 100% TO 100%
OVEN: 45C
TOTAL FLOW RATE: 1.2ML/MIN

<Chromatogram>



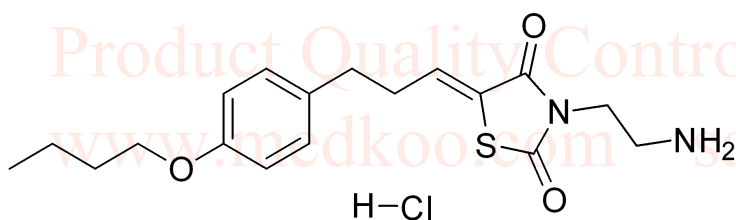
1 Det.A Ch1 / 214nm

<Result>

PeakTable

Detector A Ch1 214nm

Peak#	Ret. Time	Area	Height	Area %
1	5.831	3893252	1045836	100.000
Total		3893252	1045836	100.000



MedKoo Cat#: 558222

Name: K145 HCl salt

CAS#: 1449240-68-9 (HCl)

Lot#: BBC31216

Chemical Formula: C₁₈H₂₄N₂O₃S

Exact Mass: 348.15076

Molecular Weight: 348.46

K145 HCl salt MS Analysis

MS Spectrum

*MSD1 SPC, time=1.342, ES-API, Pos, Scan, Frag: 70

