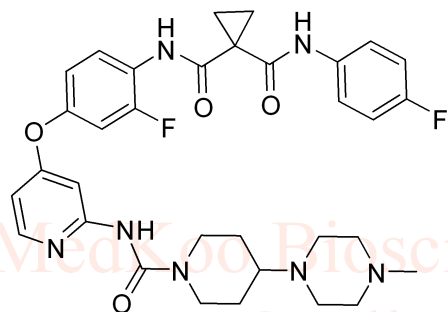


# Golvatinib (E7050) HNMR Analysis, Solvent: DMSO-d6

Product Quality Control Data  
[www.medkoo.com](http://www.medkoo.com) [sales@medkoo.com](mailto:sales@medkoo.com)



MedKoo Cat#: 201072

Name: Golvatinib

CAS#: 928037-13-2

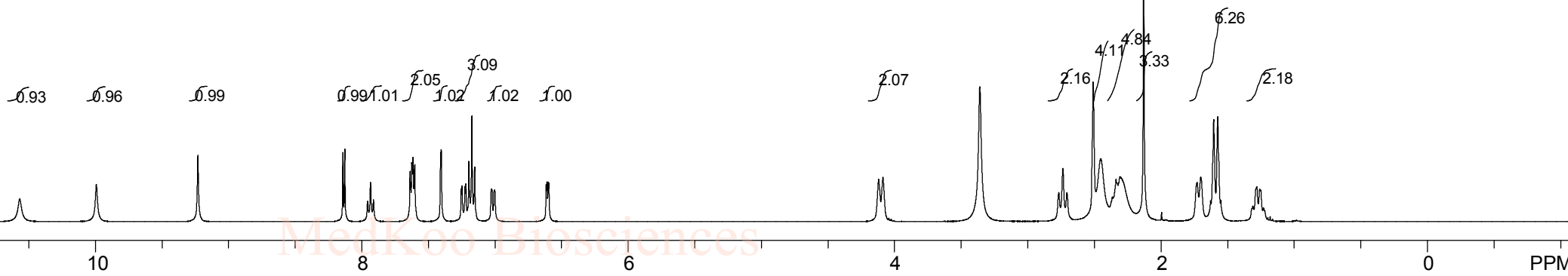
Lot#: SSC21125

Chemical Formula: C<sub>33</sub>H<sub>37</sub>F<sub>2</sub>N<sub>7</sub>O<sub>4</sub>

Exact Mass: 633.28751

Molecular Weight: 633.69

Product Quality Control Data  
[www.medkoo.com](http://www.medkoo.com) [sales@medkoo.com](mailto:sales@medkoo.com)

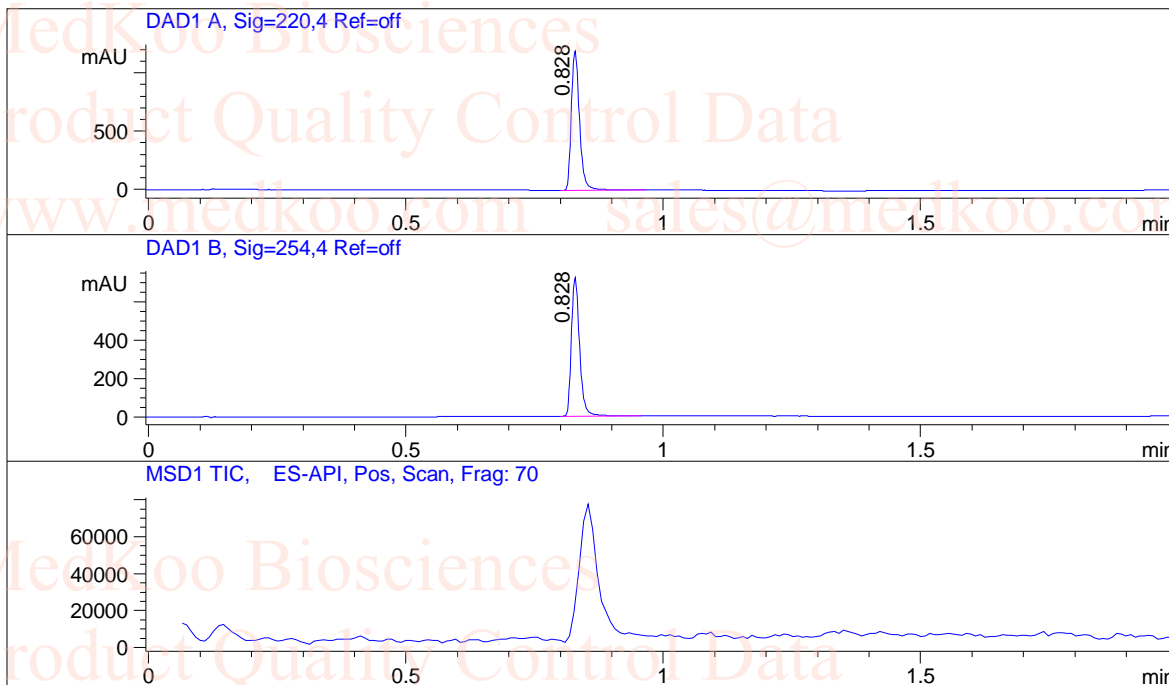


B000008669 WX00002-YCSW-01331-07 DMSO-d6 400MHz, ,						
F1: 400.130	F2: 1.000	SW1: 8224	OF1: 2471.0	PTS1d: 65536		
EX: zg30	PW: 15.0 usec	PD: 1.0 sec	NA: 8	LB: 0.3	Nuts - \$WX00002-YCSW-01331-07_1.1	

Product Quality Control Data  
[www.medkoo.com](http://www.medkoo.com) [sales@medkoo.com](mailto:sales@medkoo.com)

# Golvatinib (E7050) LC/MS Analysis

Sample ID : WX00002-YCSW-01331-08  
Location : P1-A-02  
Acq Method : D:\DATA\10-80AB\_2MIN.M  
Data Filename : D:\DATA\WX00002-YCSW-01331-08\_M1.D  
Instrument : LCMS-D  
Column:  
A:Xtimate C18 2.1\*30mm,3um  
B:XBrige Shield RP18 2.1\*50mm,5um



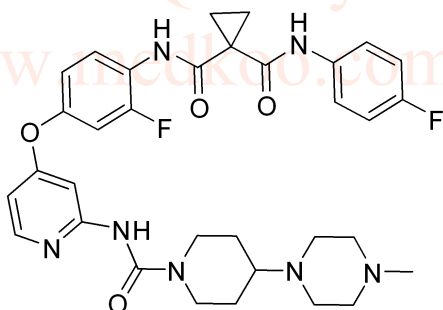
## Report

Signal 1 : DAD1 A, Sig=220,4 Ref=off

#	Meas. Ret.	Height	Width	Area	Area %
1	0.828	1196.447	0.017	1308.625	100.000

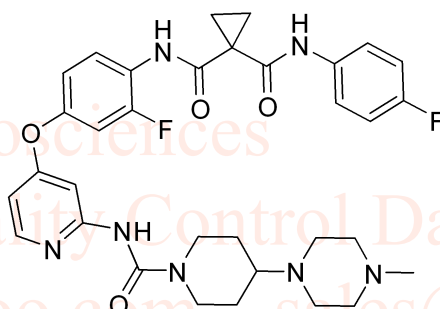
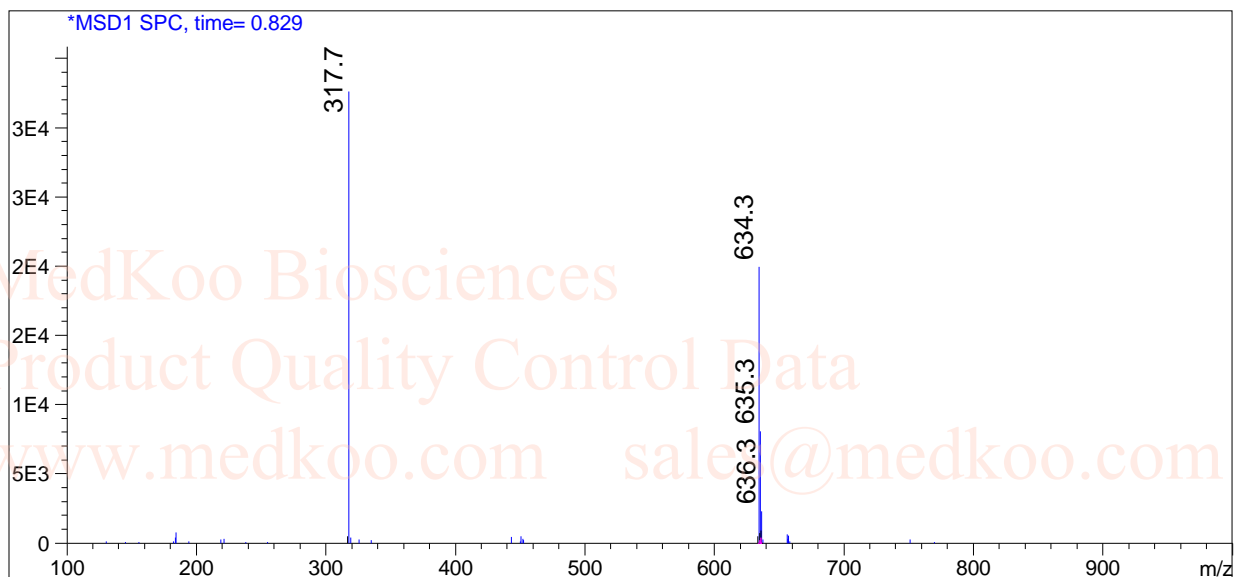
Signal 2 : DAD1 B, Sig=254,4 Ref=off

#	Meas. Ret.	Height	Width	Area	Area %
1	0.828	722.280	0.017	790.412	100.000



MedKoo Cat#: 201072  
Name: Golvatinib  
CAS#: 928037-13-2  
Lot#: SSC21125  
Chemical Formula: C33H37F2N7O4  
Exact Mass: 633.28751  
Molecular Weight: 633.69

# Golvatinib (E7050) LC/MS Analysis



MedKoo Cat#: 201072

Name: Golvatinib

CAS#: 928037-13-2

Lot#: SSC21125

Chemical Formula: C<sub>33</sub>H<sub>37</sub>F<sub>2</sub>N<sub>7</sub>O<sub>4</sub>

Exact Mass: 633.28751

Molecular Weight: 633.69