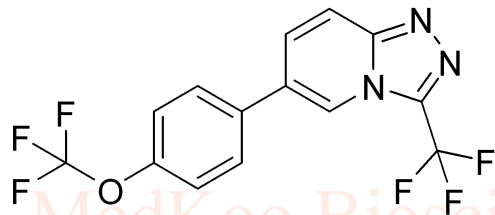
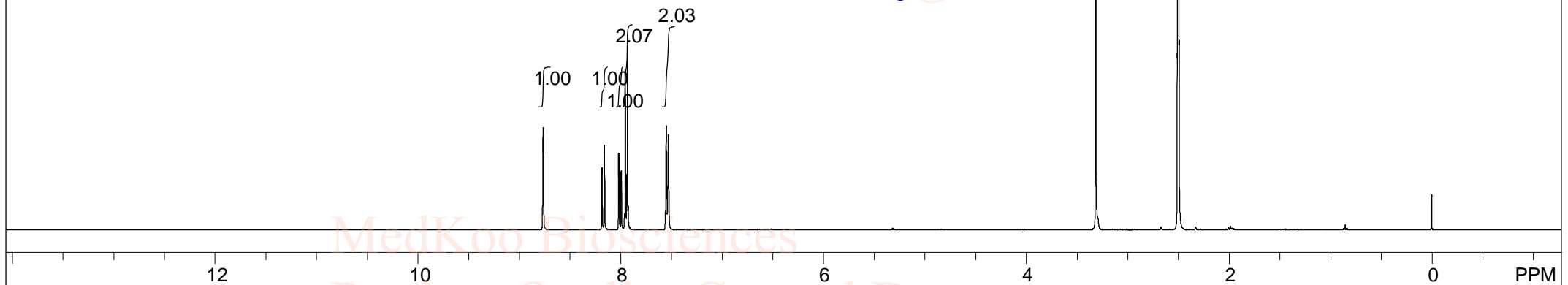


GS967 NMR Analysis, solvent = DMSO-d6



MedKoo Cat#: 510345
Name: GS967
CAS#: 1262618-39-2
Lot#: CRB50706
Chemical Formula: C₁₄H₇F₆N₃O
Exact Mass: 347.04933
Molecular Weight: 347.22

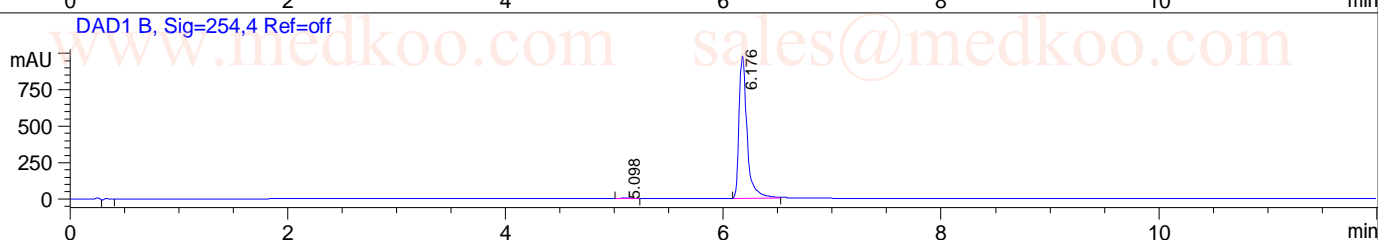
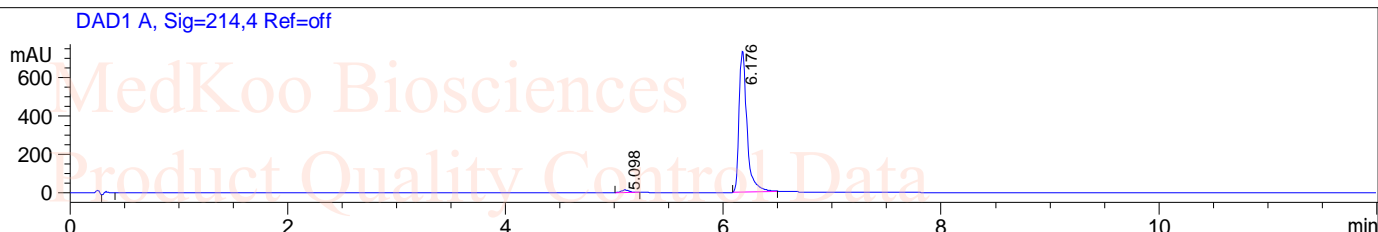


spect, DMSO,							
F1: 400.132	F2: 1.000	SW1: 8013		OF1: 2469.0		PTS1d: 65536	
EX: zg30		PW: 14.8 usec	PD: 1.0 sec	NA: 16	LB: 0.0		Nuts - \$pdata

GS967 HPLC Analysis

Sample Name : 1262618-39-1
Acq. Operator : 8
Spec. Reported : Integration

Tgt Mass(EZX) :
Location : P2-E-08
Inj : 0
Inj Volume : 2.5 ul

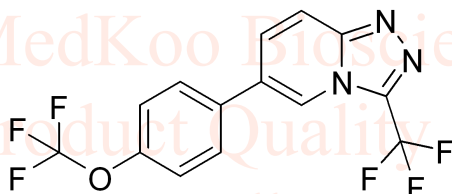


Integration Results for DAD1 A, Sig=214,4 Ref=off

RetTim	Width	Area	Height	Area%
5.10	0.08	42.50	13.51	1.12
6.18	0.08	3745.78	738.44	98.98

Integration Results for DAD1 B, Sig=254,4 Ref=off

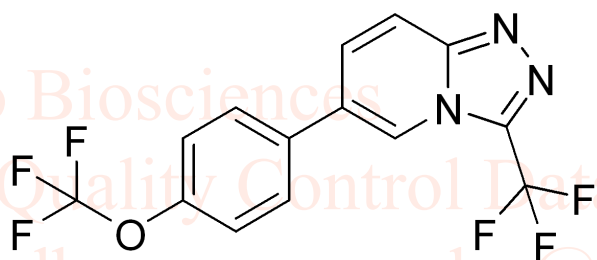
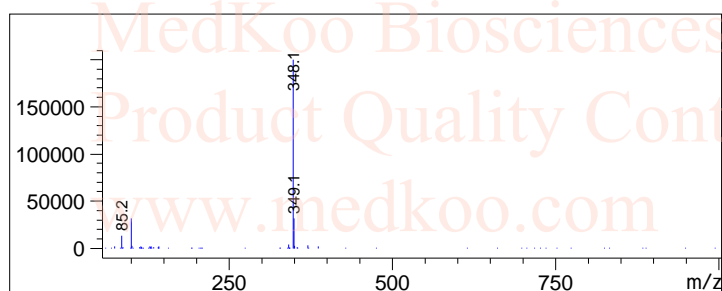
RetTim	Width	Area	Height	Area%
5.10	0.08	22.82	4.62	0.45
6.18	0.08	4997.49	979.02	99.55



MedKoo Cat#: 510345
Name: GS967
CAS#: 1262618-39-2
Lot#: CRB50706
Chemical Formula: C₁₄H₇F₆N₃O
Exact Mass: 347.04933
Molecular Weight: 347.22

GS967 MS Analysis

Sample Name : 12626
Acq. Operator : 8



MedKoo Cat#: 510345
Name: GS967
CAS#: 1262618-39-2
Lot#: CRB50706
Chemical Formula: C₁₄H₇F₆N₃O
Exact Mass: 347.04933
Molecular Weight: 347.22