

12.503

10.357

8.497

7.381

7.266

7.055

5.465

4.828

4.592

4.537

4.333

4.008

3.879

3.325

2.504

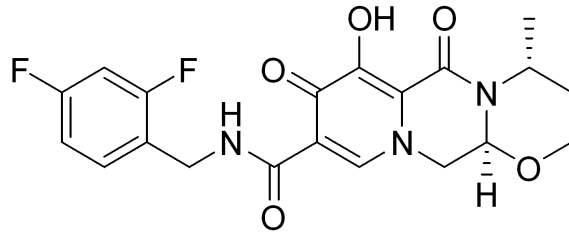
2.050

1.533

1.342

# Dolutegravir HNMR Analysis, Solvent = DMSO

MedKoo Biosciences  
Product Quality Control Data  
www.medkoo.com sales@medkoo.com



MedKoo Code#: 315142  
Name: Dolutegravir  
Lot# A8T08K10  
CAS#: 1051375-16-6  
Chemical Formula: C<sub>20</sub>H<sub>19</sub>F<sub>2</sub>N<sub>3</sub>O<sub>5</sub>  
Exact Mass: 419.1292  
Molecular Weight: 419.38

MedKoo Biosciences  
Product Quality Control Data  
www.medkoo.com sales@medkoo.com

1.00

1.03

1.02

0.99

1.03

1.01

1.03

3.08

1.08

1.03

1.03

1.03

3.08

ppm (t1)

10.0

5.0

0.0

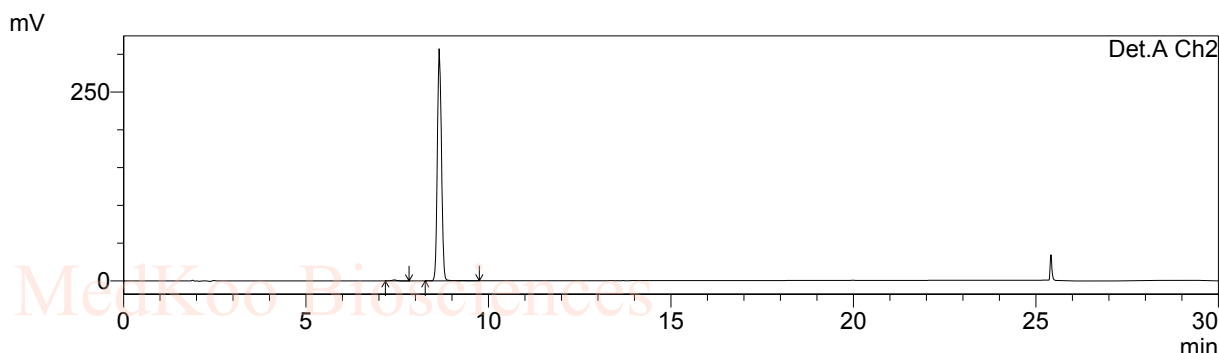
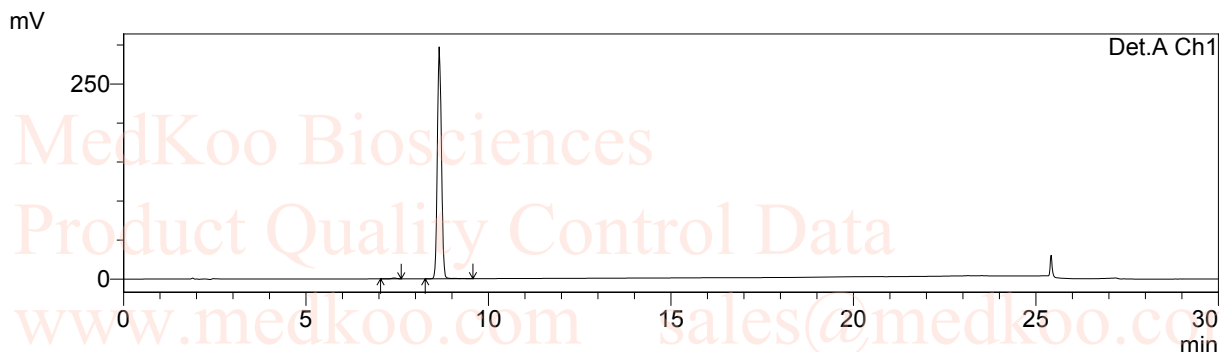
MedKoo Biosciences

www.medkoo.com

sales@medkoo.com

# Dolutegravir HPLC Analysis

Column : Inertil ODS-3, 5um 4.6\*150mm  
 Mobile phase : Solvent A: H2O(0.05%H3PO4) Solvent B:ACN(0.05%H3PO4)  
 Temperature : 40 °C  
 Flow rate : 1mL/min  
 Run time : 3min gradient(30%B), 15min gradient (30%-70%B),5 min(70%B),then 7min @(30%B)  
 Detector : UV  
 Wavelength : 220/254 nm



1 Det.A Ch1/220nm  
 2 Det.A Ch2/254nm

PeakTable

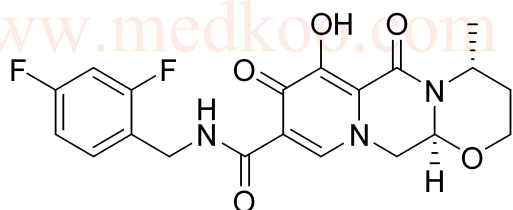
Detector A Ch1 220nm

Peak#	Ret. Time	Area	Area %	Theoretical Plate#
1	7.407	10344	0.443	13218.545
2	8.645	2325092	99.557	24952.983
Total		2335436	100.000	

PeakTable

Detector A Ch2 254nm

Peak#	Ret. Time	Area	Area %	Theoretical Plate#
1	7.407	11033	0.456	13523.893
2	8.646	2410670	99.544	24818.293
Total		2421702	100.000	



MedKoo Code#: 315142

Name: Dolutegravir

Lot# A8T08K10

CAS#: 1051375-16-6

Chemical Formula: C20H19F2N3O5

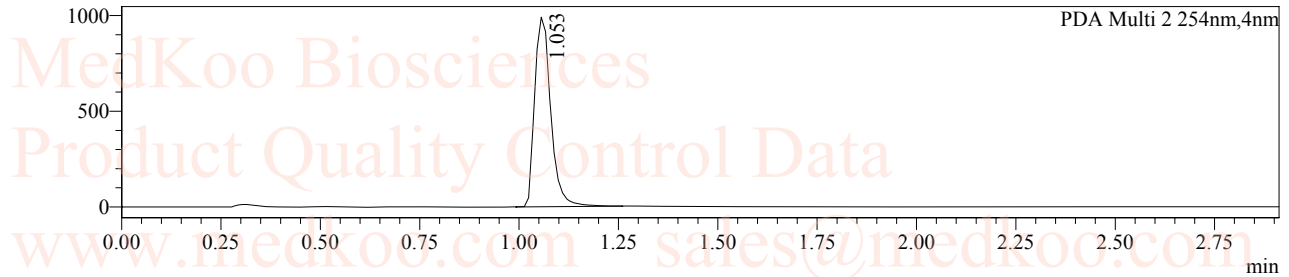
Exact Mass: 419.1292

Molecular Weight: 419.38

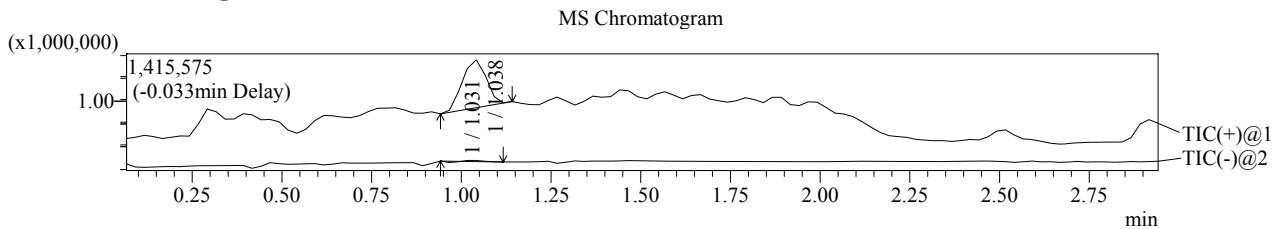
# Dolutegravir LC/MS Analysis

LC-MS condition  
Column : Chromolith SpeedROD ,RP-18e,50\*4.6mm LCMS-002  
Mobile Phase : A: H2O(0.05%FA)  
                  B: CH3CN  
Temperature : 35°C  
Flow rate : 2.5mL/min  
Run time : 0.6min@15%B,3.2min gradient(15-95% B), then0.5min@95% B,then0.7min@15% B  
Injection volume : 5 uL  
Detector : UV 254nm  
Mass range : 100-1000  
Scan : Postive/Negative

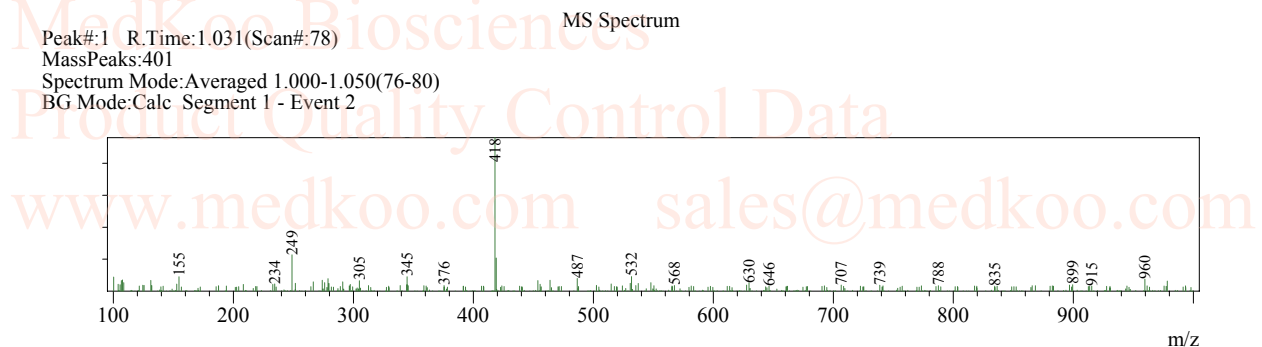
mAU



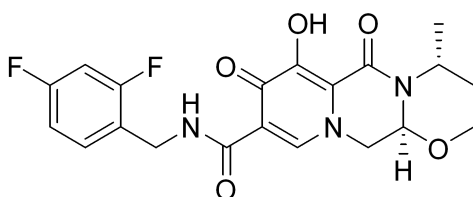
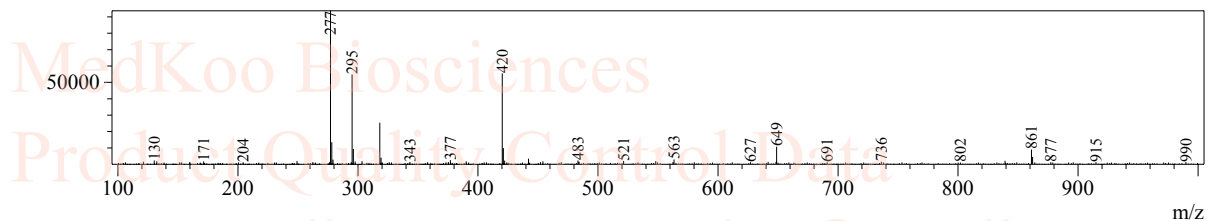
## <MS Chromatogram>



Peak#:1 R.Time:1.031(Scan#:78)  
MassPeaks:401  
Spectrum Mode:Averaged 1.000-1.050(76-80)  
BG Mode:Calc Segment 1 - Event 2



Peak#:1 R.Time:1.038(Scan#:77)  
MassPeaks:487  
Spectrum Mode:Averaged 0.992-1.042(75-79)  
BG Mode:Calc Segment 1 - Event 1



MedKoo Code#: 315142

Name: Dolutegravir

Lot# A8T08K10

CAS#: 1051375-16-6

Chemical Formula: C<sub>20</sub>H<sub>19</sub>F<sub>2</sub>N<sub>3</sub>O<sub>5</sub>

Exact Mass: 419.1292

Molecular Weight: 419.38