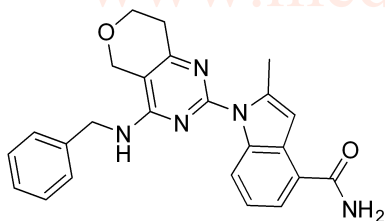


CB-5083 HNMR Analysis, Solvent= DMSO



7.865
7.845
7.747
7.694
7.679
7.664
7.467
7.448
7.365
7.346
7.328
7.321
7.304
7.269
7.253
7.235
6.958
6.939
6.919
6.854
4.658
4.643
4.609
4.000
3.986
3.972
3.375
2.775
2.762
2.748
2.512
2.508
2.478



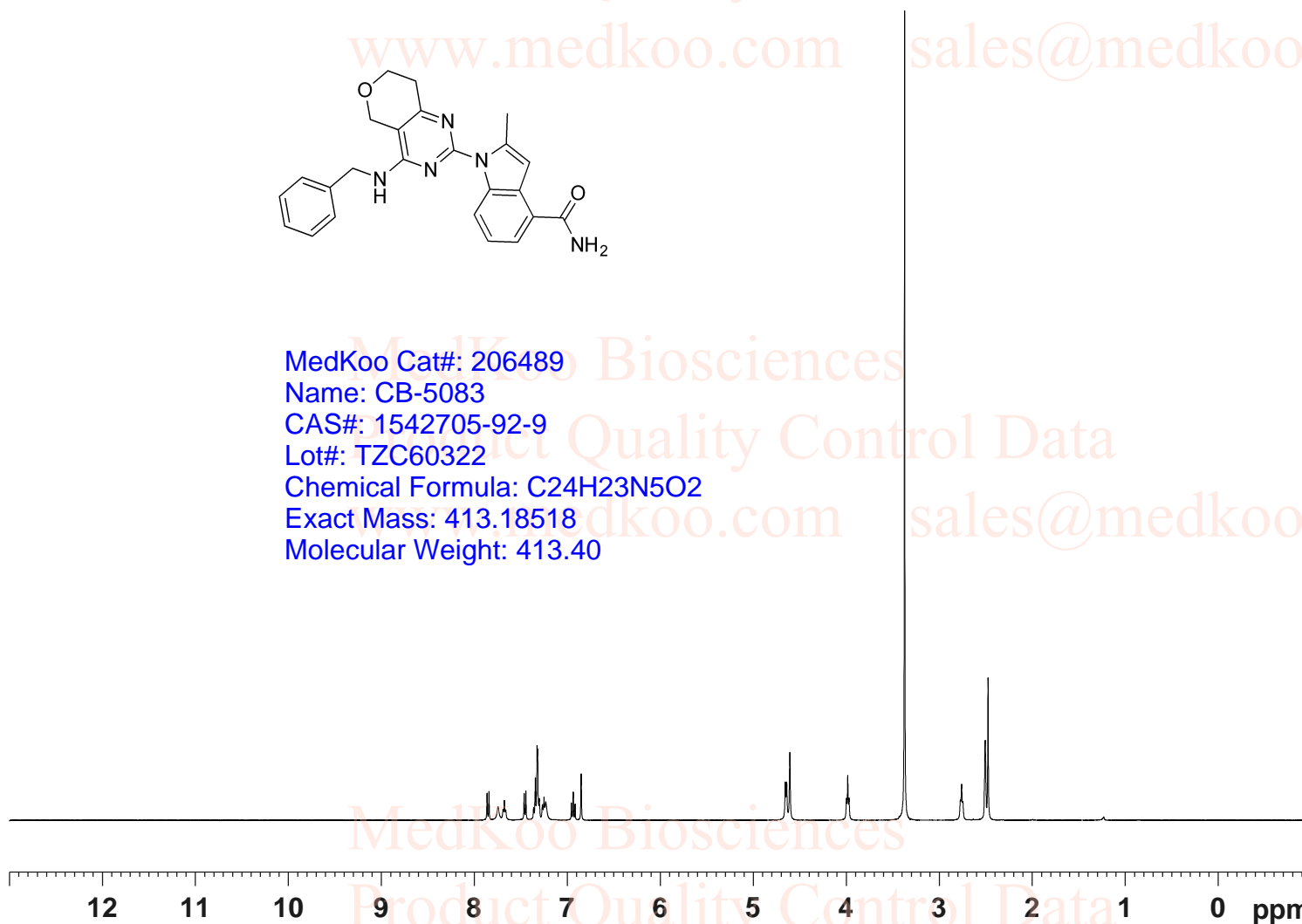
MedKoo Cat#: 206489
Name: CB-5083
CAS#: 1542705-92-9
Lot#: TZC60322
Chemical Formula: C₂₄H₂₃N₅O₂
Exact Mass: 413.18518
Molecular Weight: 413.40

Current Data Parameters
NAME 1542705-92-9
EXPNO 10
PROCNO 1

F2 - Acquisition Parameters
INSTRUM spect
PROBHD 5 mm PABBO BB-
PULPROG zg30
TD 65536
SOLVENT DMSO
NS 16
DS 2
SWH 8012.820 Hz
FIDRES 0.122266 Hz
AQ 4.0894465 sec
RG 114
DW 62.400 usec
DE 6.50 usec
TE 295.4 K
D1 1.00000000 sec
TD0 1

==== CHANNEL f1 =====
SFO1 400.1324710 MHz
NUC1 1H
P1 13.00 usec
PLW1 36.00000000 W

F2 - Processing parameters
SI 65536
SF 400.1300000 MHz
WDW no
SSB 0
LB 0 Hz
GB 0
PC 1.00



1.08
0.90
1.21
1.17
4.17
2.21
1.08
1.04

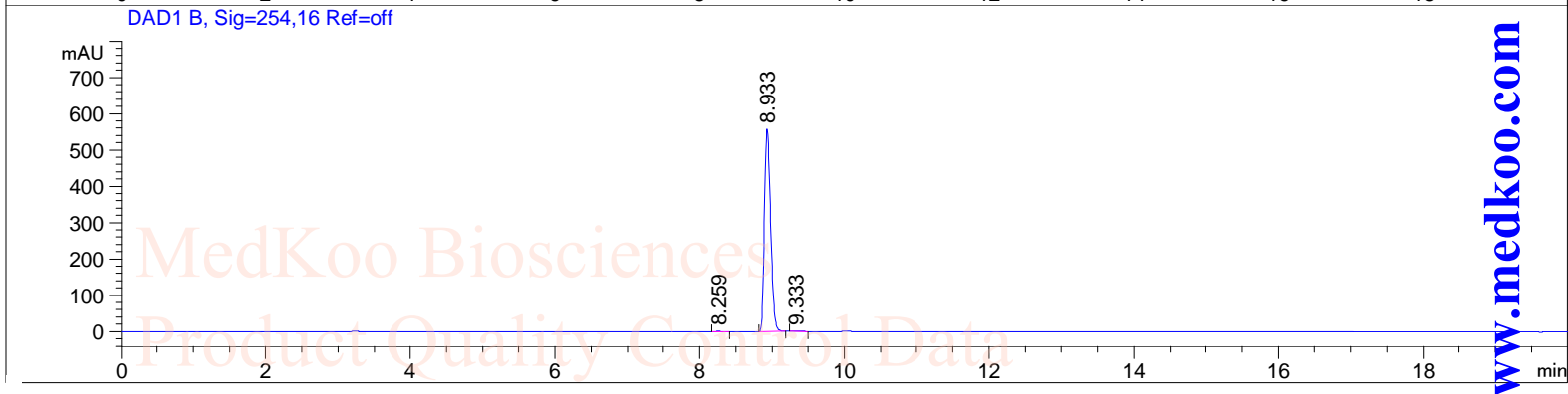
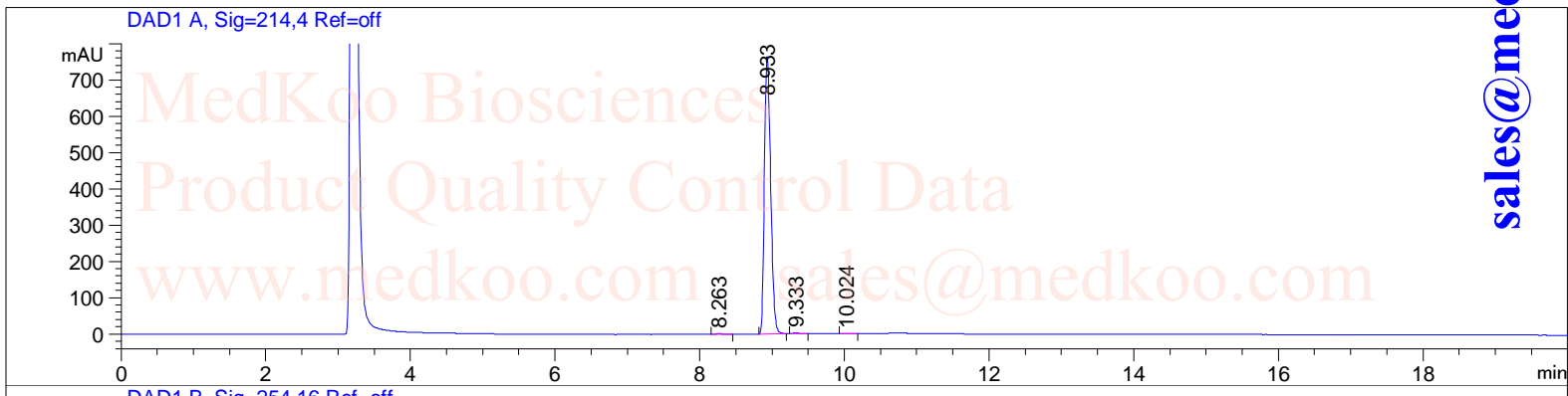
1.98
2.28
2.13

2.09
3.00

CB-5083 HPLC Analysis

Acq. Operator : ZJ
Acq. Instrument : 1
Sample Name : 1542705-92-9

Seq. Line : 5
Location : Vial 24
Inj : 1
Inj Volume : 1.0 µl
Different Inj Volume from Sequence ! Actual Inj Volume : 0.2 µl
Analysis Method : C:\CHEM32\1\METHODS\TEST-KR.M



Area Percent Report

Signal 1: DAD1 A, Sig=214,4 Ref=off

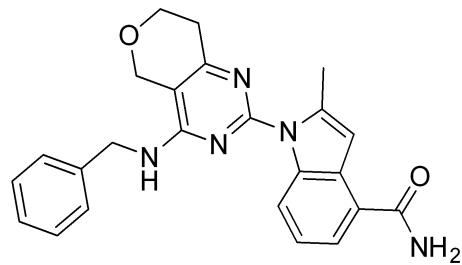
Peak #	RetTime [min]	Type	Width [min]	Area [mAU*s]	Height [mAU]	Area %
1	8.263	BB	0.1049	8.89732	1.34993	0.1945
2	8.933	BB	0.0934	4551.55029	765.66125	99.4900
3	9.333	BB	0.0828	6.72760	1.33398	0.1471
4	10.024	BB	0.0955	7.70901	1.25826	0.1685

Totals : 4574.88423 769.60342

Signal 2: DAD1 B, Sig=254,16 Ref=off

Peak #	RetTime [min]	Type	Width [min]	Area [mAU*s]	Height [mAU]	Area %
1	8.259	BB	0.0988	6.22595	9.70981e-1	0.1882
2	8.933	BB	0.0908	3296.43091	558.99146	99.6376
3	9.333	BB	0.0835	5.76398	1.09255	0.1742

Totals : 3308.42085 561.05499



MedKoo Cat#: 206489
Name: CB-5083
CAS#: 1542705-92-9
Lot#: TZC60322
Chemical Formula: C24H23N5O2
Exact Mass: 413.18518
Molecular Weight: 413.40

CB-5083 MS Analysis

MS Spectrum

*MSD1 SPC, time=4.706:5.035 ES-API, Pos, Scan, Fr

Max: 787443

100
414.1

80

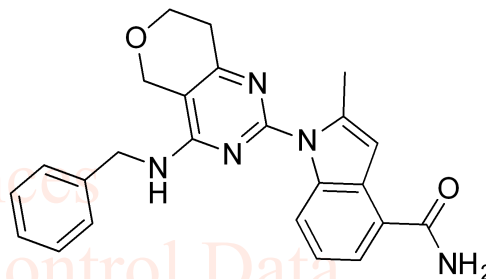
60

40

20

0

415.1



MedKoo Cat#: 206489

Name: CB-5083

CAS#: 1542705-92-9

Lot#: TZC60322

Chemical Formula: C₂₄H₂₃N₅O₂

Exact Mass: 413.18518

Molecular Weight: 413.40

MedKoo Biosciences

Product Quality Control Data

www.medkoo.com

sales@medkoo.com

MedKoo Biosciences

Product Quality Control Data

www.medkoo.com

sales@medkoo.com

200

400

600

800

1000

1200

1400

m/z

sales@medkoo.com

www.medkoo.com

MedKoo Biosciences