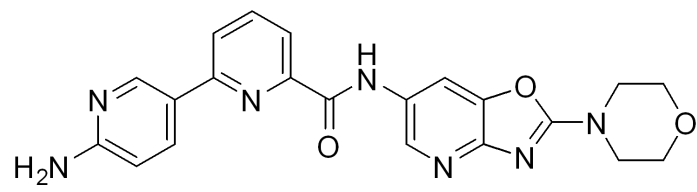
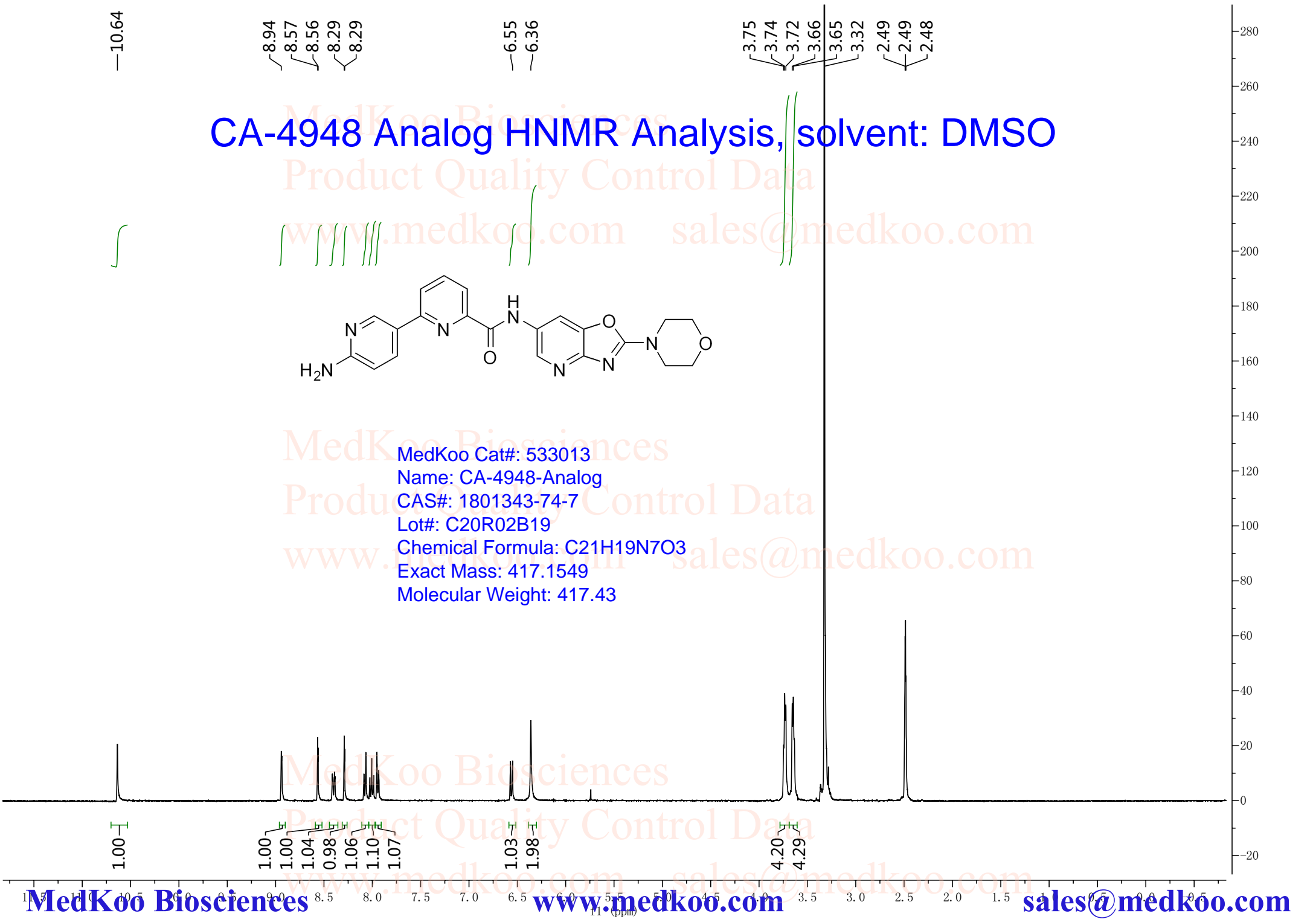


# CA-4948 Analog HNMR Analysis, solvent: DMSO

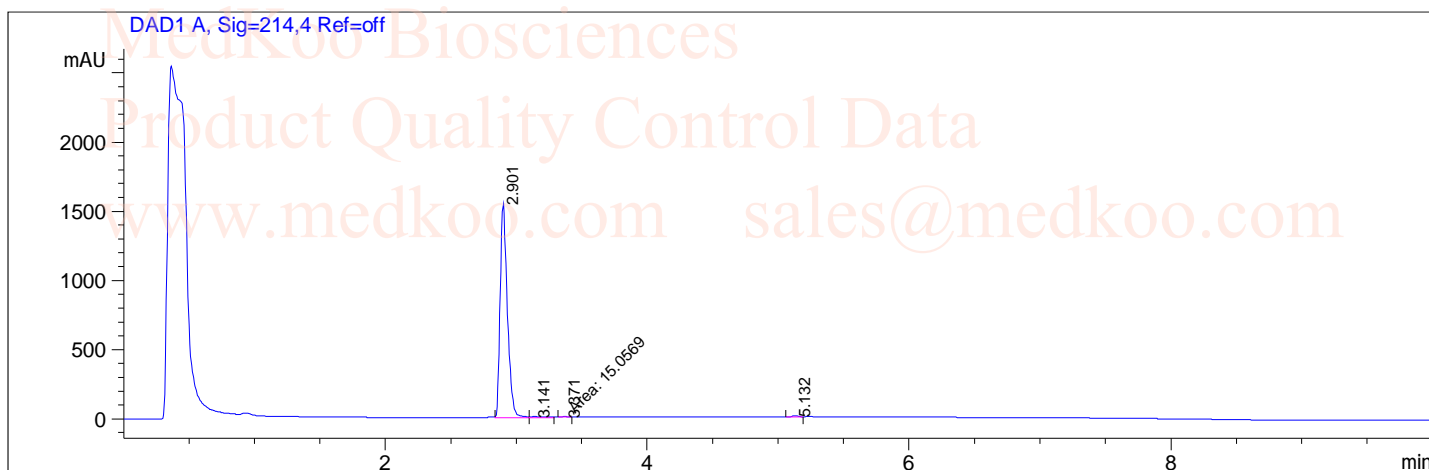


MedKoo Cat#: 533013  
Name: CA-4948-Analog  
CAS#: 1801343-74-7  
Lot#: C20R02B19  
Chemical Formula: C<sub>21</sub>H<sub>19</sub>N<sub>7</sub>O<sub>3</sub>  
Exact Mass: 417.1549  
Molecular Weight: 417.43



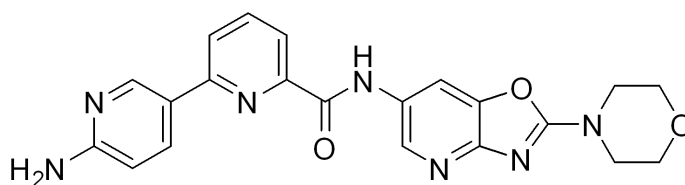
# CA-4948-Analog HPLC Analysis

Sample Name : CA  
Acq. Operator : 2  
Spec. Reported : Integration  
Tgt Mass(EZX) :  
Location : P2-D-06  
Inj : 0  
Inj Volume : 6 ul



Integration Results for DAD1 A, Sig=214,4 Ref=off

RetTim	Width	Area	Height	Area%
2.90	0.06	5920.01	1545.07	98.37
3.14	0.11	41.34	5.41	0.69
3.37	0.05	15.06	4.65	0.25
5.13	0.06	41.92	11.56	0.70



MedKoo Cat#: 533013

Name: CA-4948-Analog

CAS#: 1801343-74-7

Lot#: C20R02B19

Chemical Formula: C<sub>21</sub>H<sub>19</sub>N<sub>7</sub>O<sub>3</sub>

Exact Mass: 417.1549

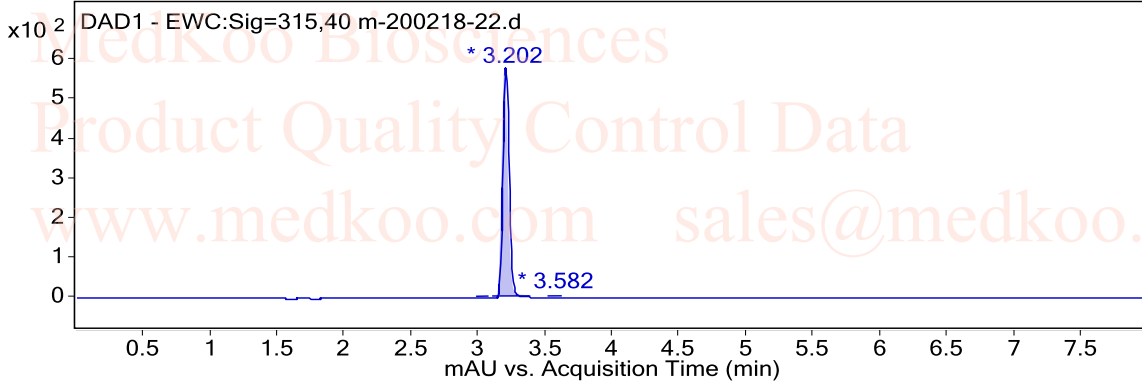
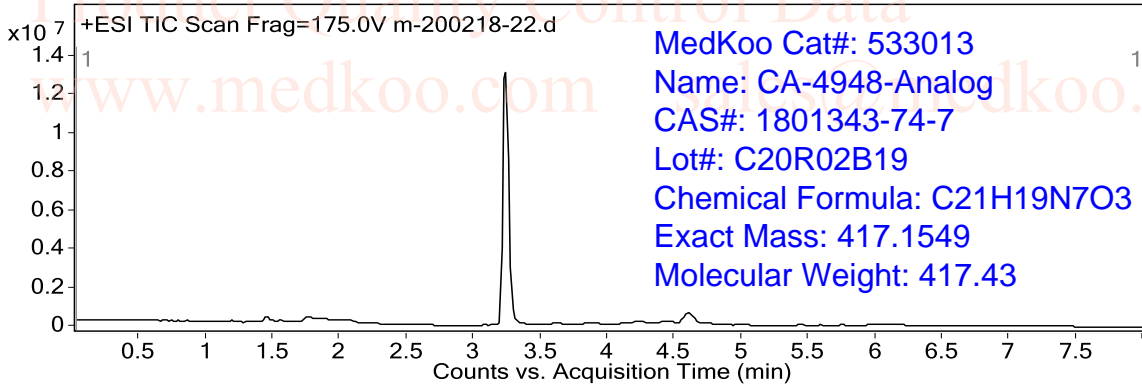
Molecular Weight: 417.43

# CA-4948-Analog LC/MS Analysis

**Sample Type** Sample **Sample Name**  
**Instrument Name** Instrument 1 **Position** P1-F7  
**Acq Method** LCMS-PO.m **User Name** Dave C  
**IRM Calibration Status** Success **DA Method** QA-1.m  
**Comment**

**Sample Group**  
**Acquisition SW** 6200 series TOF/6500 series  
**Version** Q-TOF B.05.01 (B5125.1)  
**User Chromatograms**

**Fragmentor Voltage** 175 **Collision Energy** 0 **Ionization Mode** ESI



## Integration Peak List

Peak	Start	RT	End	Height	Area	Area sum %
1	2.989	3.036	3.082	0.49	1.52	0.08
2	3.109	3.202	3.389	577.43	1906.528	99.75
3	3.522	3.582	3.629	1.02	3.311	0.17

## User Spectra

**Fragmentor Voltage** 175 **Collision Energy** 0 **Ionization Mode** ESI

