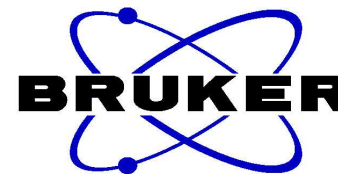


Batefenterol HNMR Analysis, solvent: DMSO-d6



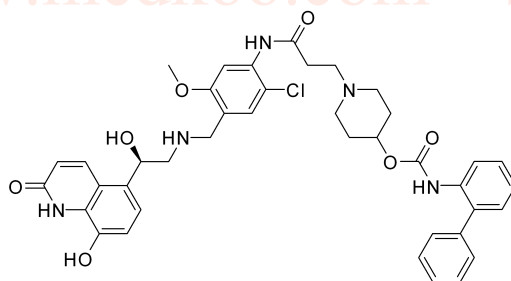
```

NAME      Batefenterol
EXPNO     1
PROCNO    1
INSTRUM   spect
PROBHD    5 mm PABBO BB-
PULPROG   zg30
TD         65536
SOLVENT   DMSO
NS         12
DS         0
SWH       8223.685 Hz
FIDRES    0.125483 Hz
AQ        3.9846387 sec
RG         144
DW         60.800 usec
DE         6.50 usec
TE         300.0 K
D1         1.0000000 sec
TD0        1
    
```

```

===== CHANNEL f1 =====
NUC1      1H
P1        10.85 usec
PL1       -4.00 dB
PL1W      20.19063568 W
SF01      400.1324710 MHz
SI         32768
SF         400.1300000 MHz
WDW        EM
SSB         0
LB         0.30 Hz
GB          0
PC          1.00
    
```

Chemical shift values (ppm): 10.308, 8.718, 8.147, 8.122, 7.801, 7.418, 7.397, 7.382, 7.365, 7.335, 7.313, 7.091, 7.071, 6.954, 6.934, 6.508, 6.483, 5.766, 5.140, 4.523, 4.509, 3.793, 3.739, 3.357, 3.175, 2.755, 2.617, 2.554, 2.508, 2.239, 1.774, 1.524



MedKoo Cat#: 319652

Name: Batefenterol

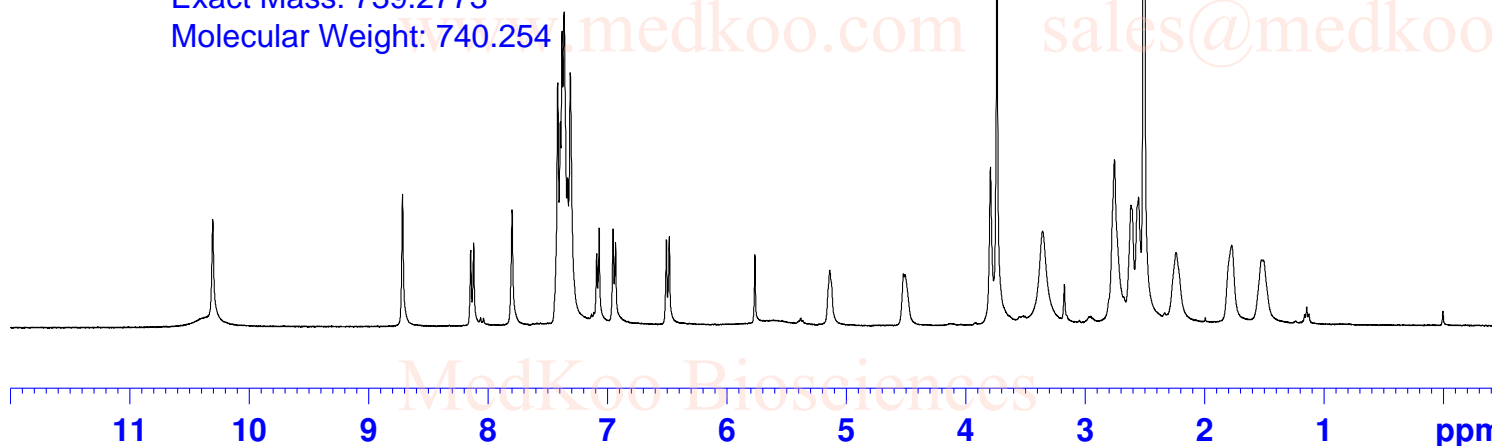
CAS#: 743461-65-6

Lot#: C7R12B11

Chemical Formula: C40H42ClN5O7

Exact Mass: 739.2773

Molecular Weight: 740.254

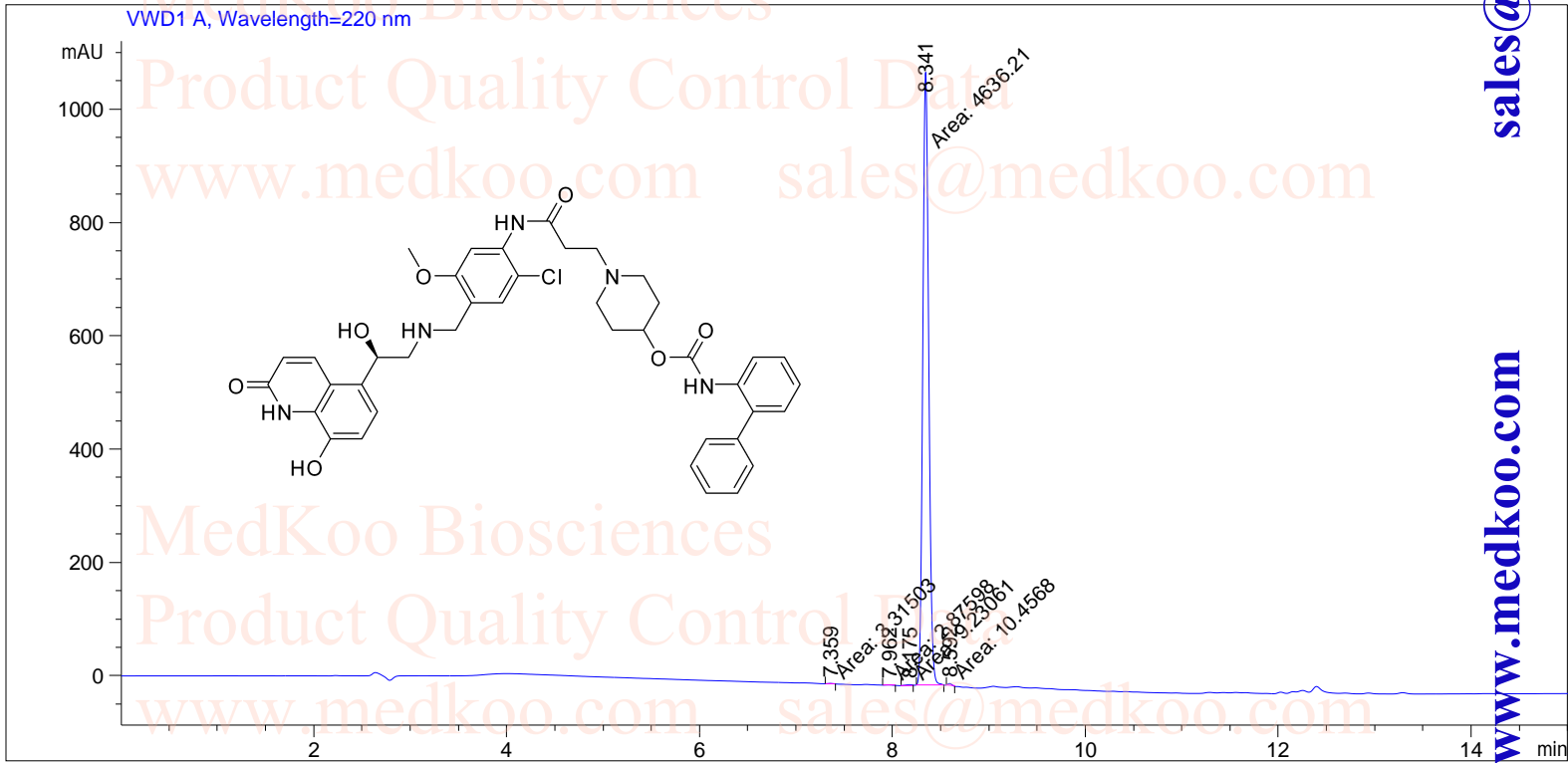


Integration values: 1.51, 0.89, 0.90, 0.91, 9.08, 2.22, 1.04, 0.58, 0.92, 1.00, 4.52, 0.30, 3.21, 3.29, 2.15, 1.90, 1.95, 0.23

Batefenterol HPLC Analysis

```

=====
Acq. Operator   : System                               Seq. Line :    1
Acq. Instrument : LC1260                               Location  : Vial 63
Sample Name    : Batefenterol                          Inj       :    1
                                                    Inj Volume: 0 µl
Different Inj Volume from Sequence !   Actual Inj Volume : 2 µl
Acq. Method    : E:\DATA\YZJData\10-90 AC 220NM 15MIN.M
Analysis Method : D:\PUBLIC\LSK-C5.D\DA.M (5-95 6MIN.M)
=====
    
```



Area Percent Report

```

=====
Sorted By      :      Signal
Multiplier     :      1.0000
Dilution      :      1.0000
Use Multiplier & Dilution Factor with ISTDs
Signal 1: VWD1 A, Wavelength=220 nm
    
```

```

MedKoo Cat#: 319652
Name: Batefenterol
CAS#: 743461-65-6
Lot#: C7R12B11
Chemical Formula: C40H42ClN5O7
Exact Mass: 739.2773
Molecular Weight: 740.254
    
```

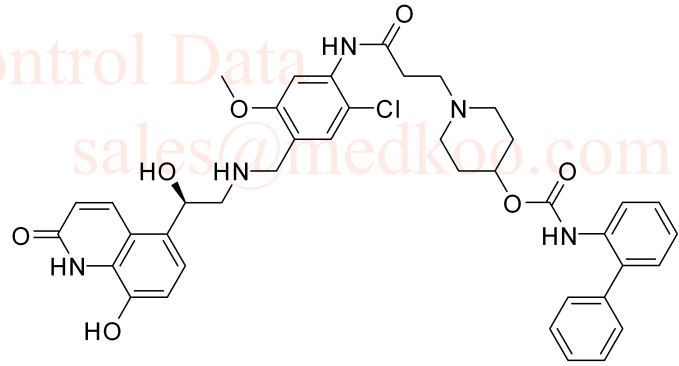
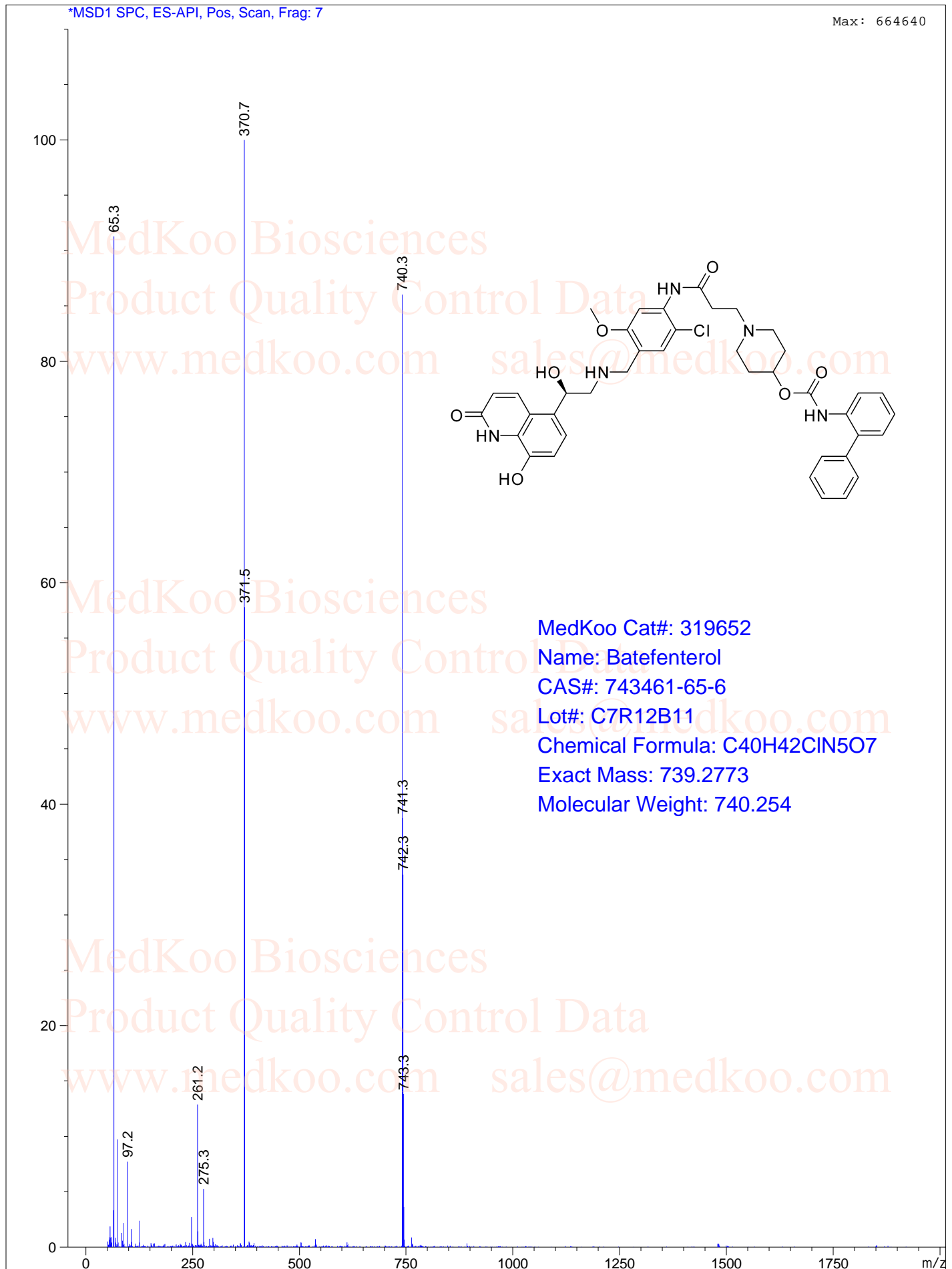
Peak #	RetTime [min]	Type	Width [min]	Area [mAU*s]	Height [mAU]	Area %
1	7.359	MM	0.0632	3.31503	8.73738e-1	0.0711
2	7.962	MM	0.0737	2.87598	6.50789e-1	0.0617
3	8.175	MM	0.0856	9.23061	1.79826	0.1980
4	8.341	MM	0.0713	4636.20752	1083.54822	99.4449

Batefenterol MS Analysis

MS Spectrum

*MSD1 SPC, ES-API, Pos, Scan, Frag: 7

Max: 664640



MedKoo Cat#: 319652
Name: Batefenterol
CAS#: 743461-65-6
Lot#: C7R12B11
Chemical Formula: C40H42ClN5O7
Exact Mass: 739.2773
Molecular Weight: 740.254

sales@medkoo.com

www.medkoo.com

MedKoo Biosciences