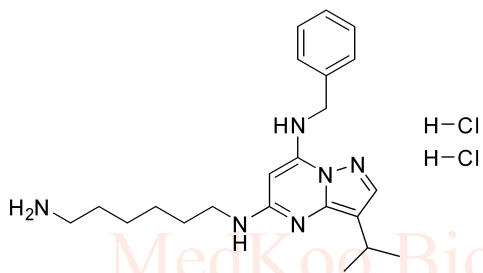


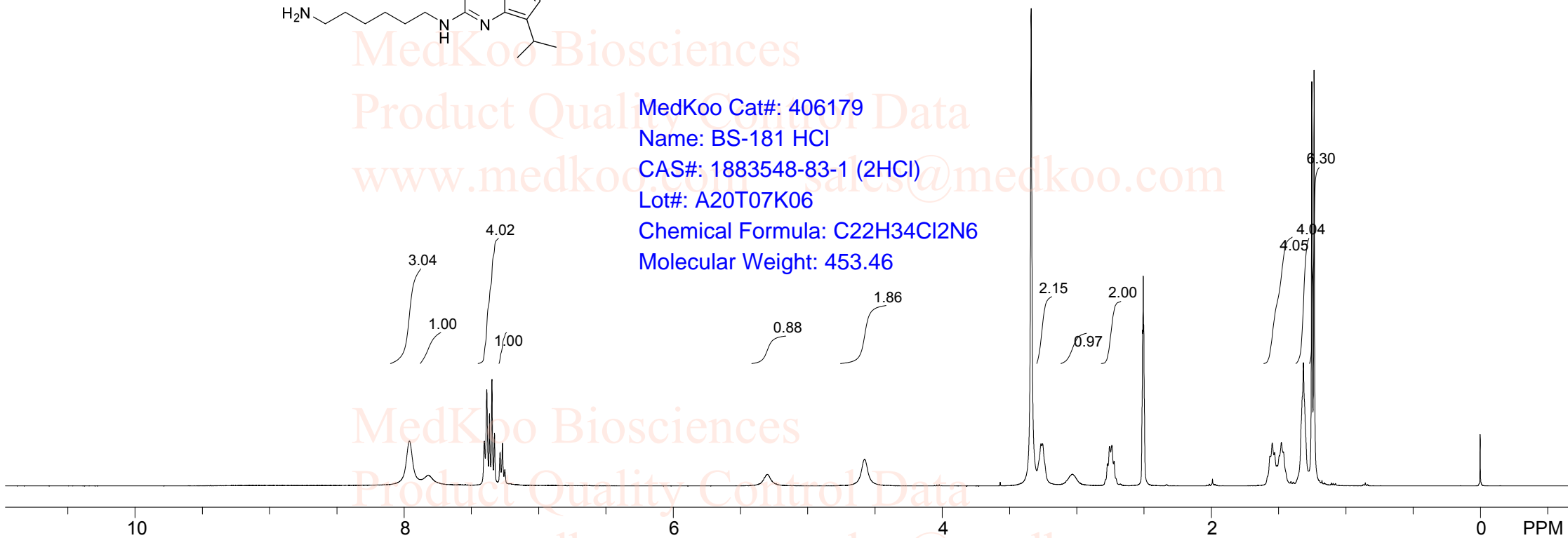
## BS-181 HCl HNMR Analysis in DMSO

MedKoo Biosciences  
 Product Quality Control Data  
[www.medkoo.com](http://www.medkoo.com) [sales@medkoo.com](mailto:sales@medkoo.com)



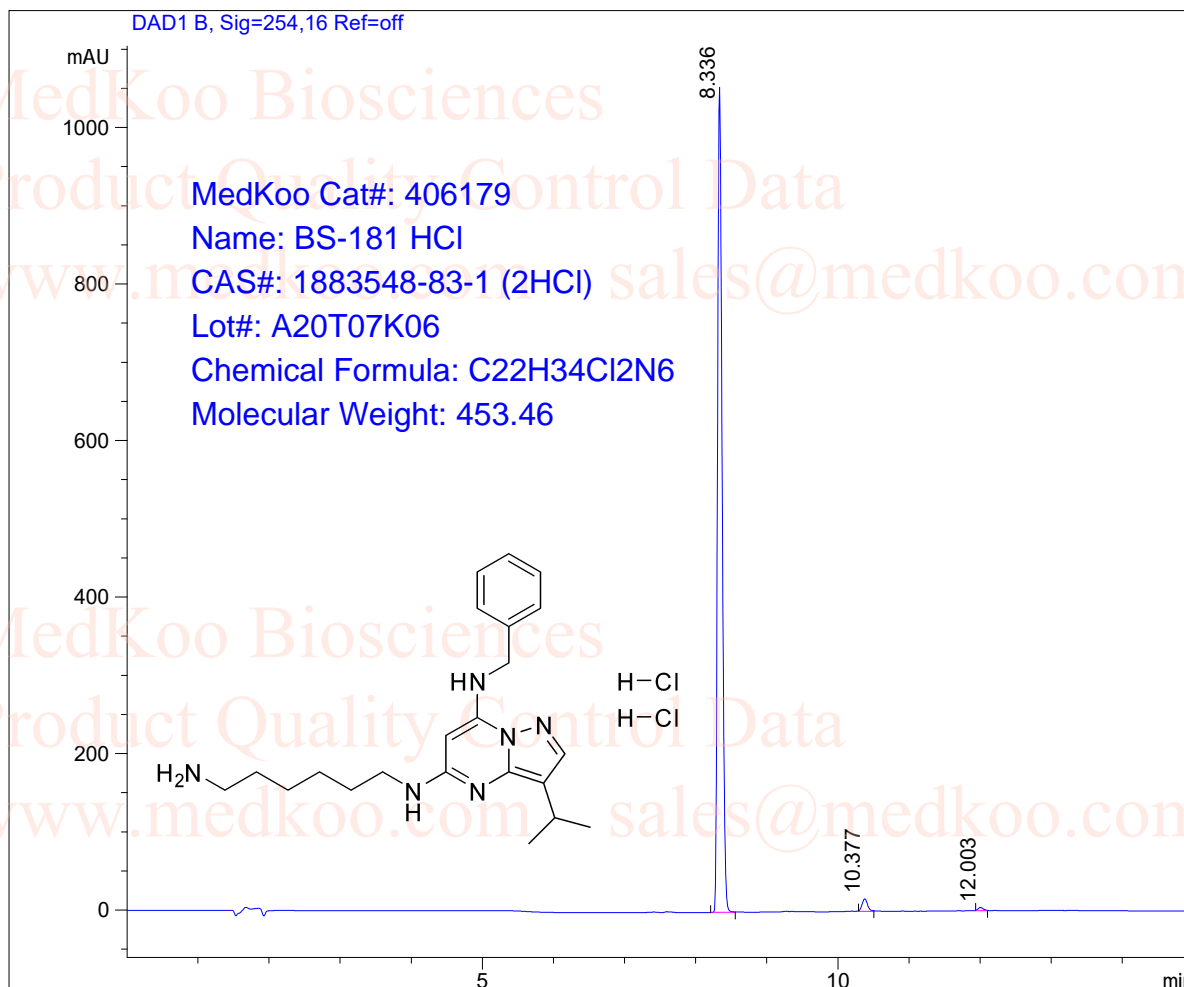
MedKoo Biosciences  
 Product Quality Control Data  
[www.medkoo.com](http://www.medkoo.com) [sales@medkoo.com](mailto:sales@medkoo.com)

MedKoo Cat#: 406179  
 Name: BS-181 HCl  
 CAS#: 1883548-83-1 (2HCl)  
 Lot#: A20T07K06  
 Chemical Formula: C<sub>22</sub>H<sub>34</sub>Cl<sub>2</sub>N<sub>6</sub>  
 Molecular Weight: 453.46



# BS-181 HCl HPLC Analysis

Sample Name : 1397219-81-6 Inj. Vol. : 5ul  
Data File : D:\DATA-LCMS-13\1397219-81-6.D Location : Vial 83  
Acq Operator : LCMS-13  
Acq. Method : D:\data-lcms-13\C2-P-05-95-TFA-15MI  
Method Info. : column:Eclipse XDB-C18 5um 4.6\*150mm ;mobile phase:B(ACN), A(0.05%TFA); gradient(B%):as Acq.Method above



=====  
Integration Results  
=====

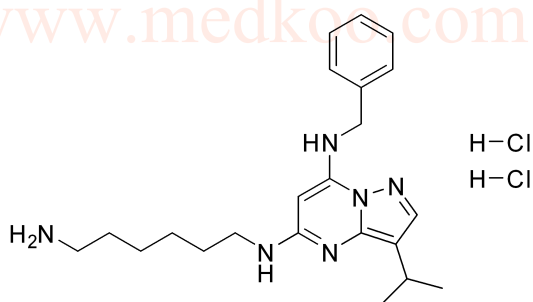
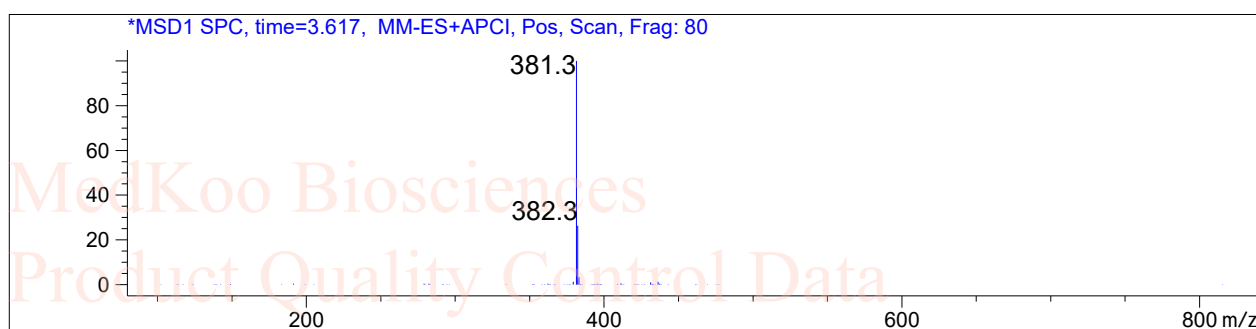
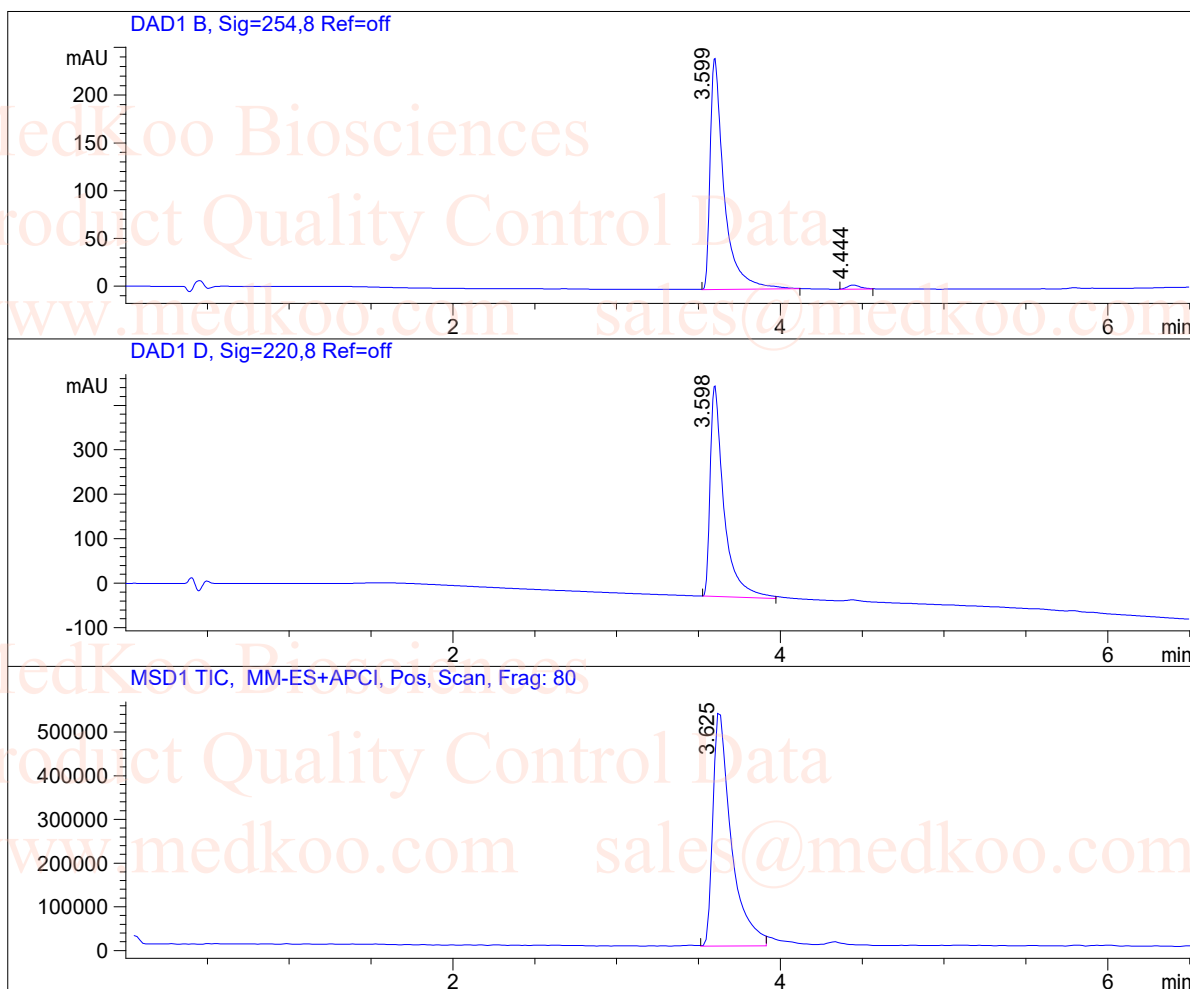
Signal 1: DAD1 B, Sig=254,16 Ref=off

#	R.T.	Type	Height	Height%	Width	Area	Area %
1	8.336	MF	1056.525	98.140	0.073	4654.732	97.739
2	10.377	MF	15.910	1.478	0.090	86.067	1.807
3	12.003	MF	4.109	0.382	0.088	21.630	0.454

=====  
www.medkoo.com sales@medkoo.com

# BS-181 HCl LC/MS Analysis

Sample Name : 1397219-81-6  
Data File : D:\DATA-LCMS-13\1397219-81-6.D  
Inj. Vol. : 3ul  
Location : Vial 83  
Acq Operator : LCMS-13  
Acq. Method : D:\data-lcms-13\P-05-60-TFA.M  
Method Info. : column:Xbridge C18 5um 4.6\*50mm ;mobile phase:B(ACN),  
A(0.05%TFA); gradient(B%):as Acq.Method above



MedKoo Cat#: 406179  
Name: BS-181 HCl  
CAS#: 1883548-83-1 (2HCl)  
Lot#: A20T07K06  
Chemical Formula: C<sub>22</sub>H<sub>34</sub>Cl<sub>2</sub>N<sub>6</sub>  
Molecular Weight: 453.46