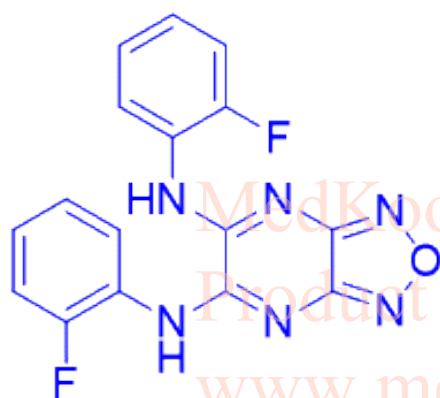


# BAM15 HNMR Analysis, Solvent: DMSO (60 oC)

Product Quality Control Data

www.medkoo.com sales@medkoo.com



MedKoo Cat#: 522443

Name: BAM15

CAS#: 210302-17-3

LOT#: T21D05P15

Chemical Formula: C<sub>16</sub>H<sub>10</sub>F<sub>2</sub>N<sub>6</sub>O

Exact Mass: 340.08842

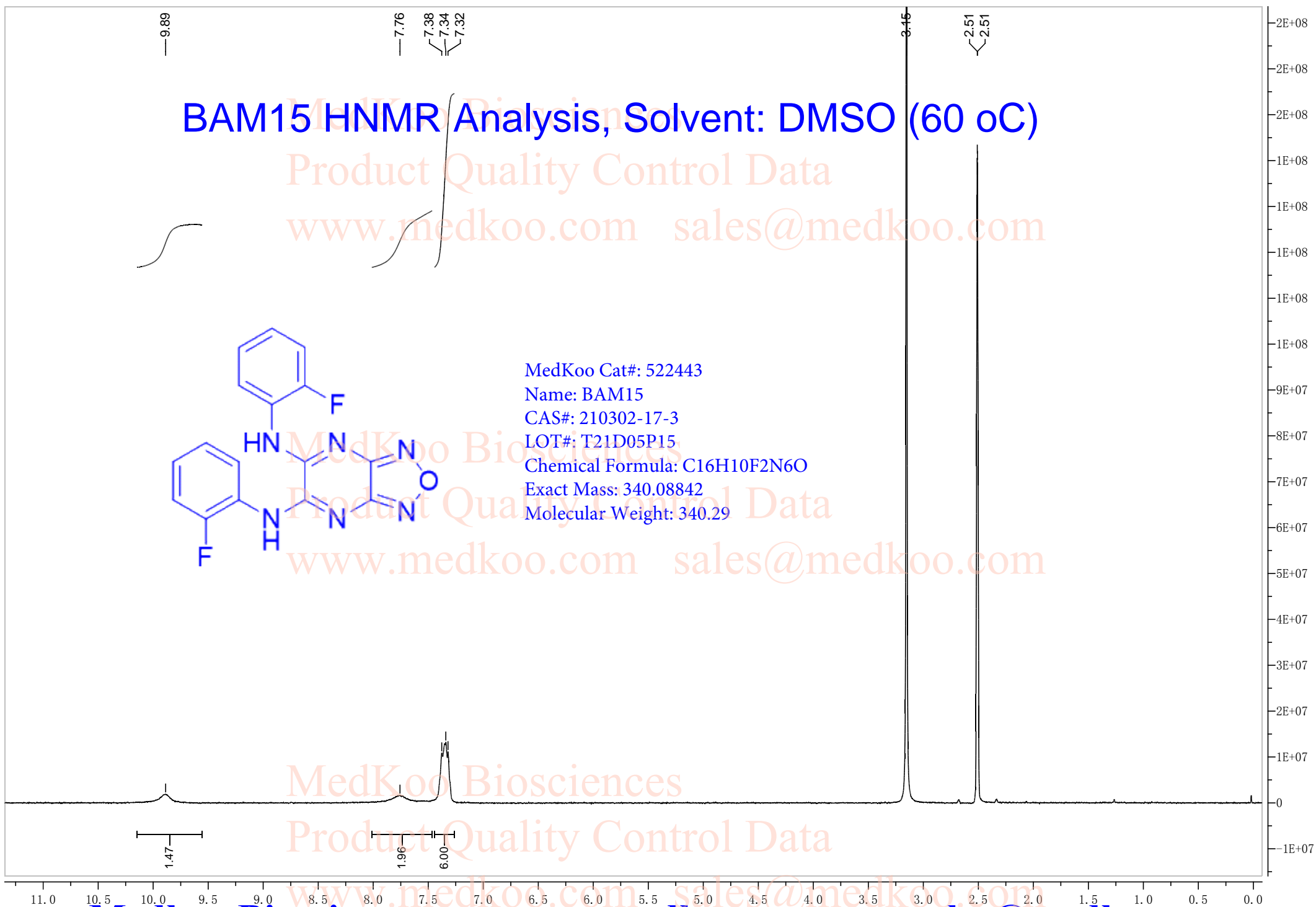
Molecular Weight: 340.29

www.medkoo.com sales@medkoo.com

MedKoo Biosciences

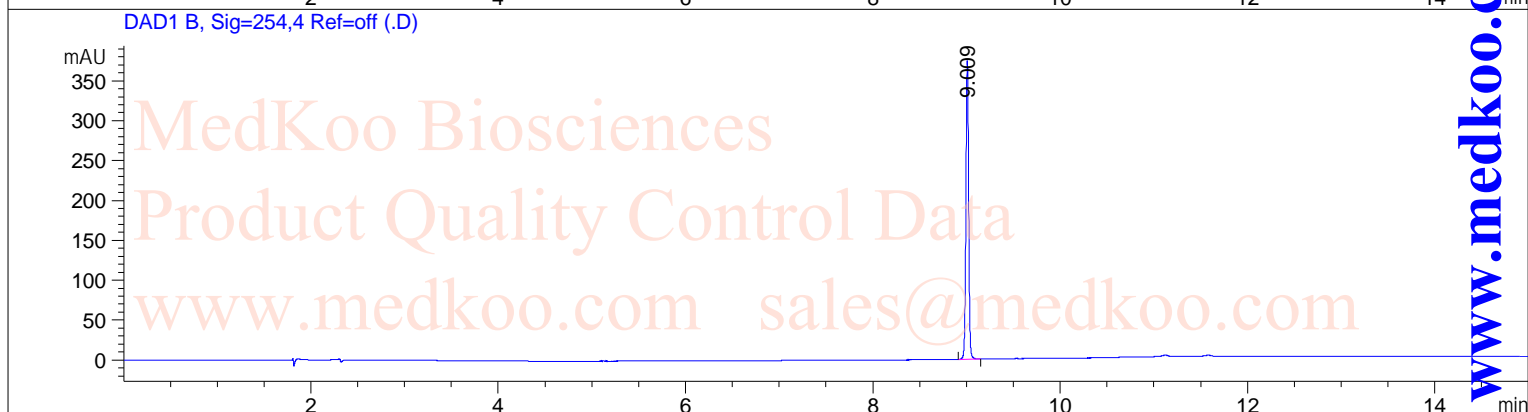
Product Quality Control Data

www.medkoo.com sales@medkoo.com



# BAM15 HPLC Analysis

Acq. Operator :  
Acq. Instrument : HPLC Location : P1-D-05  
Sample Name : BAM15 Inj Volume : 1.0 µl  
Method : C:\CHEM32\1\METHODS\2-HPLC-15MIN.M  
Mobile Phase: A: water(0.05%TFA) B: ACN(0.05%TFA)  
Gradient: 5% increase to 95%B within 8 min, 95%B for 7 min.  
Flow Rate: 1.0ml/min  
Column: Sunfire C18, 4.6\*150mm, 3.5µm  
Column Temperature: 40 C  
Sample Info : Easy-Access Method: '2-HPLC-15MIN'



## Area Percent Report

Signal 1: DAD1 A, Sig=214, 4 Ref=off

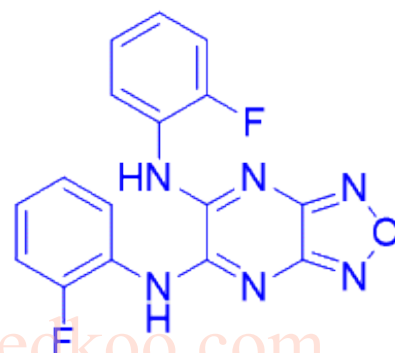
Peak #	RetTime [min]	Type	Width [min]	Area [mAU*s]	Height [mAU]	Area %
1	9.009	BB	0.0312	1838.87622	906.42365	100.0000

Totals : 1838.87622 906.42365

Signal 2: DAD1 B, Sig=254, 4 Ref=off

Peak #	RetTime [min]	Type	Width [min]	Area [mAU*s]	Height [mAU]	Area %
1	9.009	BB	0.0312	760.98853	374.32834	100.0000

Totals : 760.98853 374.32834



MedKoo Cat#: 522443  
Name: BAM15  
CAS#: 210302-17-3  
LOT#: T21D05P15  
Chemical Formula:  
C16H10F2N6O  
Exact Mass: 340.08842  
Molecular Weight: 340.29

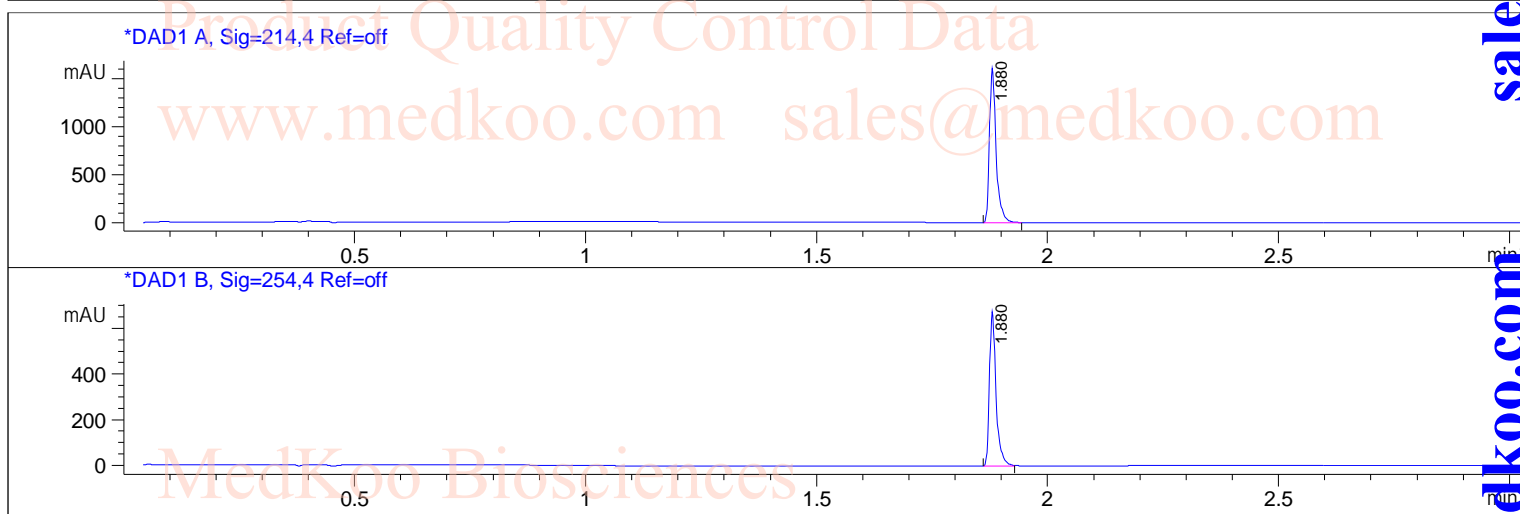
sales@medkoo.com

www.medkoo.com

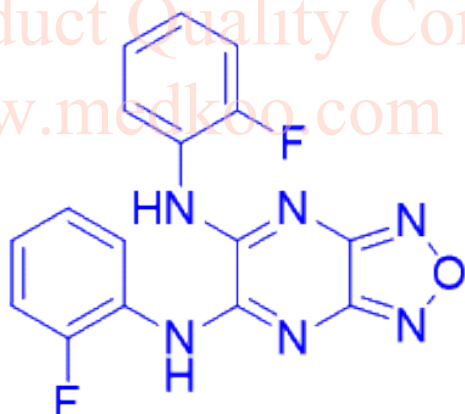
Medkoo Biosciences

# BAM15 LC/MS Analysis

Sample Name : BAM15 Tgt Mass(EZX) :  
Acq. Operator : Location : P1-F-06  
Spec. Reported : MS Integration Inj : 1  
Acq. Method : D:\METHODS\1-POS-3MIN.M Inj Volume : 1 ul  
Analysis Method : D:\METHODS\1-POS-3MIN.M  
Sample Info : Easy-Access Method: '1-POS-3MIN.M'  
Method Info : Mobile Phase: A: water(0.01%TFA) B: ACN(0.01%TFA)  
Gradient: 5%B increase to 95%B within 1.3 min, 95%B for 1.7 min.  
Flow Rate: 2.0ml/min  
Column: Sunfire C18, 4.6\*50mm, 3.5um  
Column Temperature: 50 C  
Detection: UV(214,4nm) and MS(ESI, Pos mode, 110 to 1200 amu)



Ret. Time: 1.87 <<<< POSITIVE SPECTRA >>>>



MedKoo Cat#: 522443  
Name: BAM15  
CAS#: 210302-17-3  
LOT#: T21D05P15  
Chemical Formula:  
C16H10F2N6O  
Exact Mass: 340.08842  
Molecular Weight: 340.29